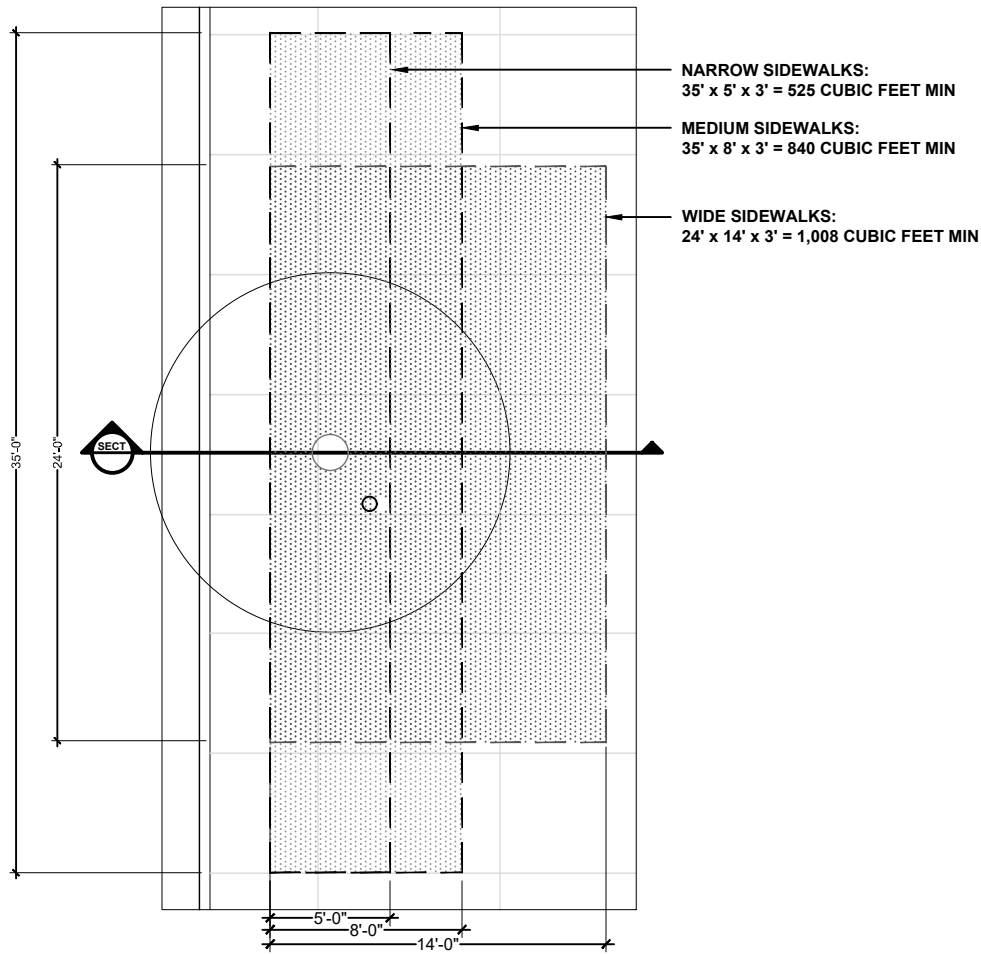
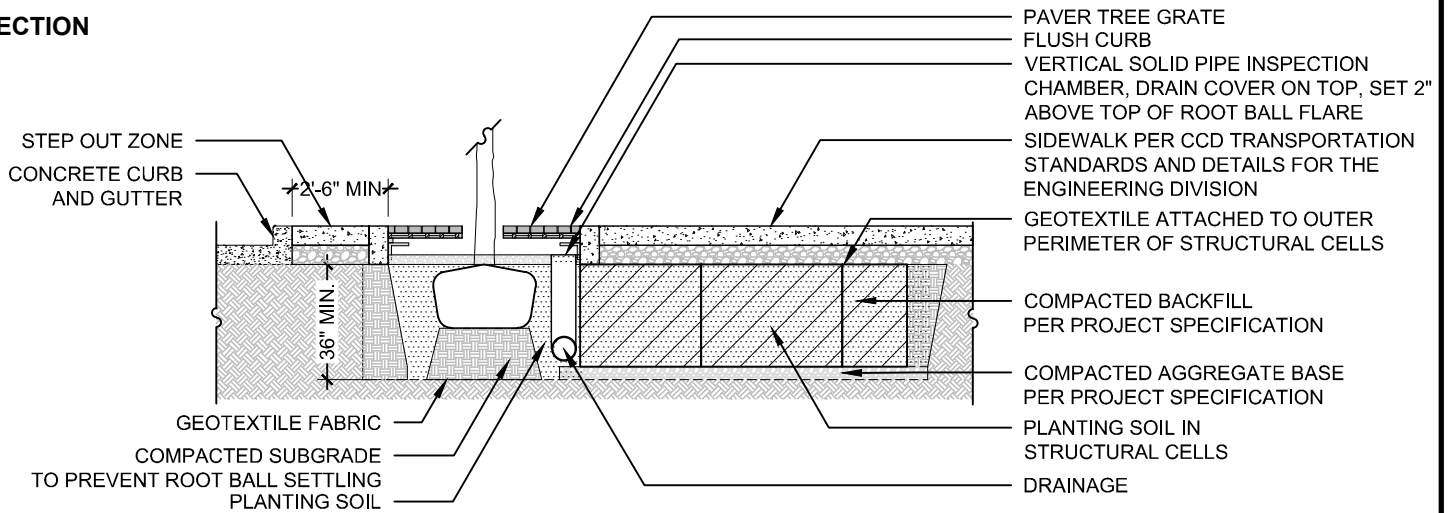


PLAN



SECTION



NOTES:

- STRUCTURAL CELL IS FOR REPRESENTATION PURPOSES ONLY
- TREE PLANTING PER OFFICE OF THE CITY FORESTER STANDARDS AND SPECIFICATIONS
- CONCRETE JOINTING AND SCORING OUTSIDE OPEN PLANTING AREA SHALL BE COORDINATED WITH DOTI FIELD STAFF
- STRUCTURAL CELL SOLUTIONS REQUIRE DOTI TIER II ENCROACHMENT REVIEW
- FOR ALL NEW INSTALLATIONS, AUTOMATIC IRRIGATION SYSTEMS SHALL BE PROVIDED
- INSTALLATION MAY BE IMPACTED BY THE PRESENCE OF PUBLIC OR PRIVATE UTILITIES, AND NOTHING IN THESE DETAILS SHALL SUPERCEDE UTILITY REQUIREMENTS
- TREE GRATES ARE NOT TO BE INCLUDED AS PART OF THE PAR, PER TS+D DWG 5.0, NOTE 3.

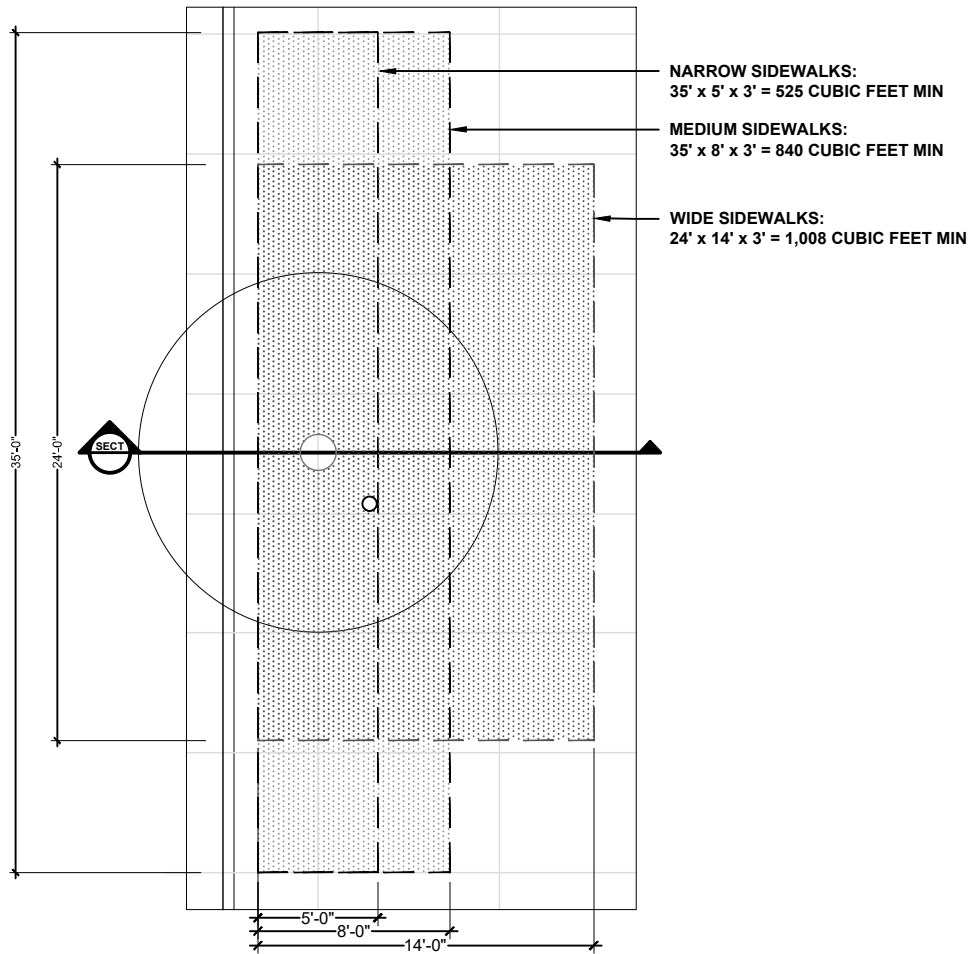
City and County of Denver
Soil Volume Toolkit

Date:
04/05

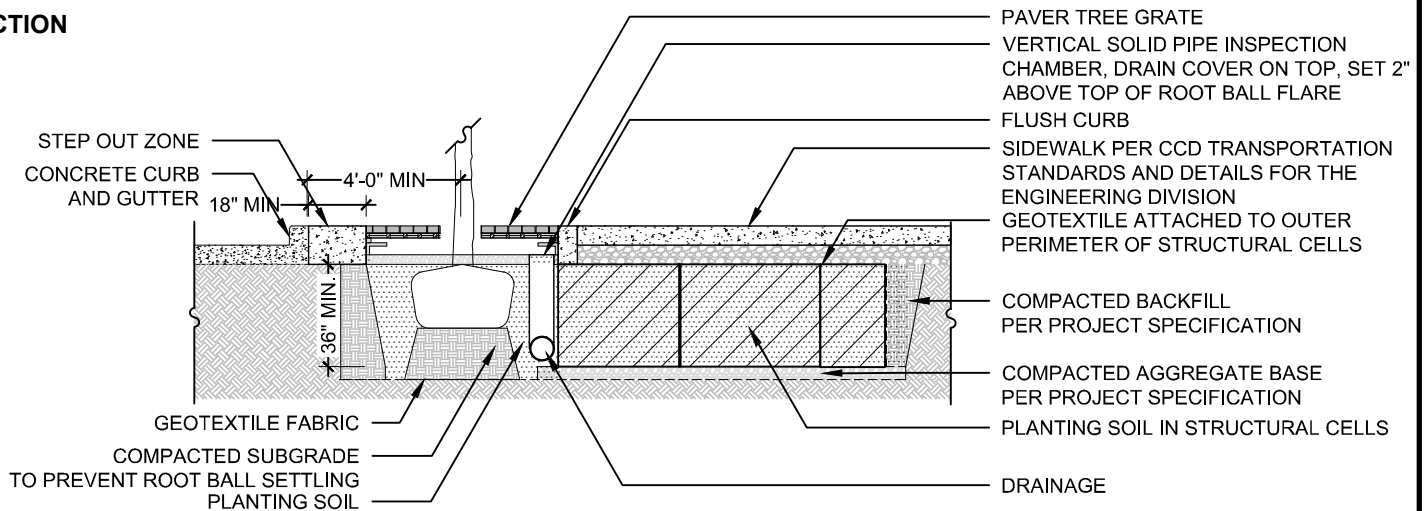
PAVER GRATE (ADJACENT TO PARKING)

Std. Dwg.
1.3

PLAN



SECTION



NOTES:

- STRUCTURAL CELL IS FOR REPRESENTATION PURPOSES ONLY
- TREE PLANTING PER OFFICE OF THE CITY FORESTER STANDARDS AND SPECIFICATIONS
- CONCRETE JOINTING AND SCORING OUTSIDE OPEN PLANTING AREA SHALL BE COORDINATED WITH DOTI FIELD STAFF
- STRUCTURAL CELL SOLUTIONS REQUIRE DOTI TIER II ENCROACHMENT REVIEW
- FOR ALL NEW INSTALLATIONS, AUTOMATIC IRRIGATION SYSTEMS SHALL BE PROVIDED
- INSTALLATION MAY BE IMPACTED BY THE PRESENCE OF PUBLIC OR PRIVATE UTILITIES, AND NOTHING IN THESE DETAILS SHALL SUPERCEDE UTILITY REQUIREMENTS
- TREE GRATES ARE NOT TO BE INCLUDED AS PART OF THE PAR, PER TS+D DWG 5.0, NOTE 3.

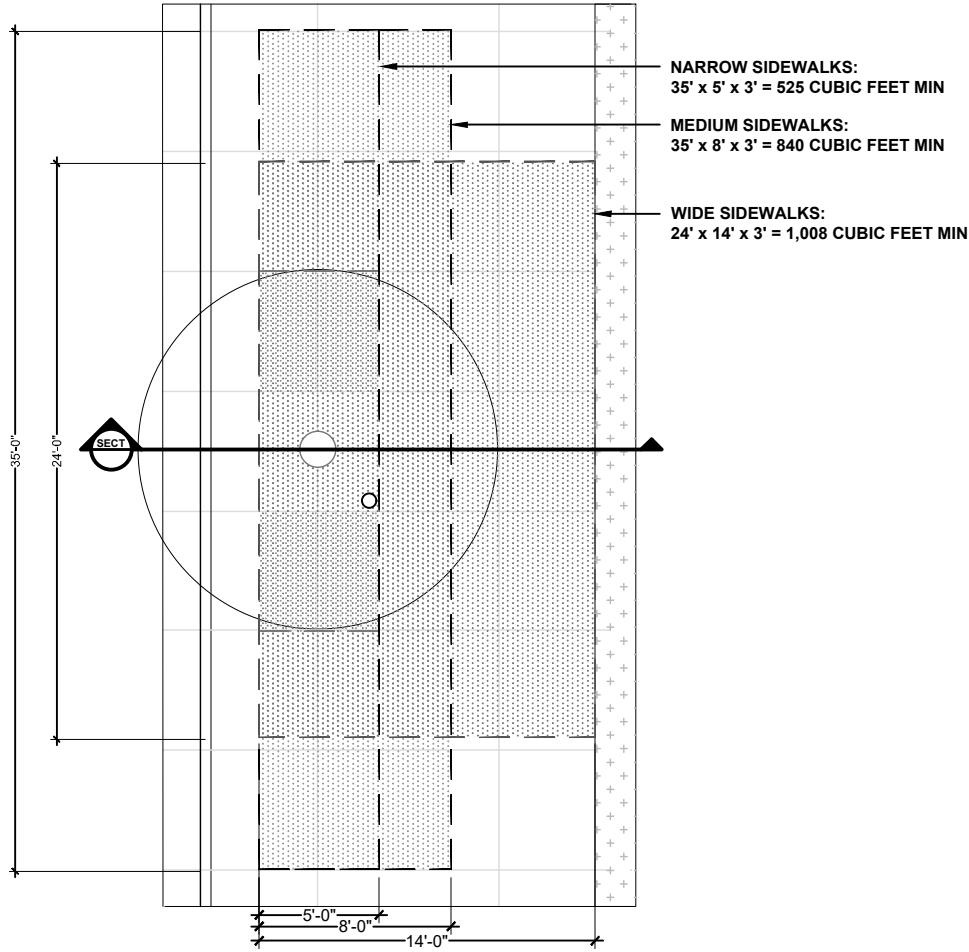
City and County of Denver
Soil Volume Toolkit

Date:
04/05

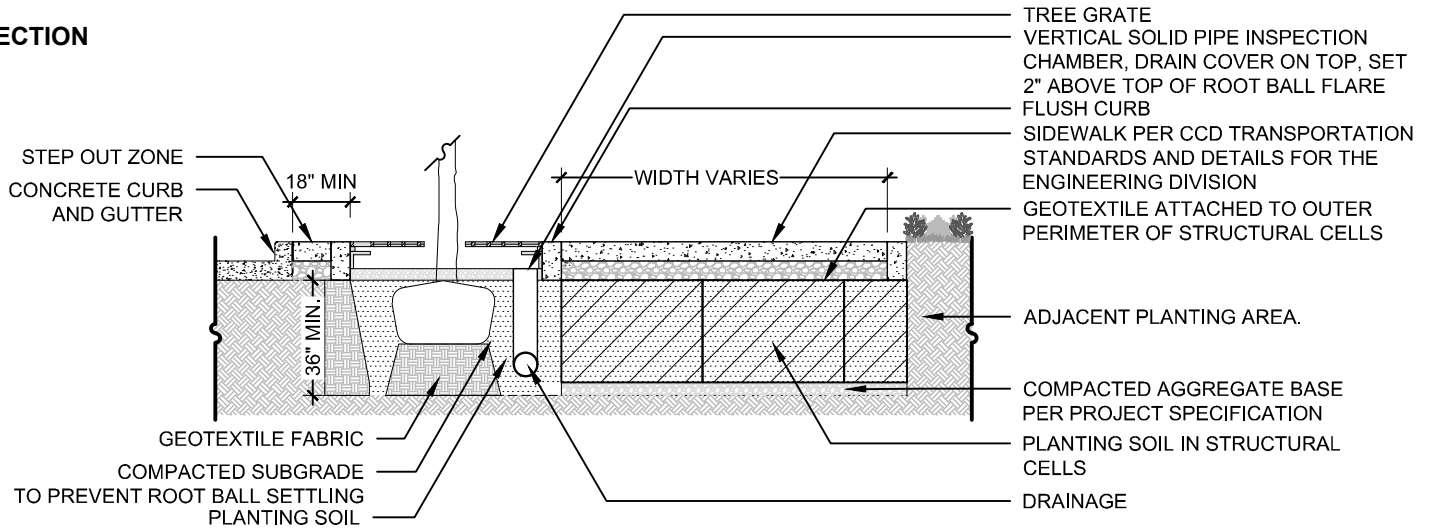
PAVER GRATE (NO PARKING)

Std. Dwg.
1.4

PLAN



SECTION

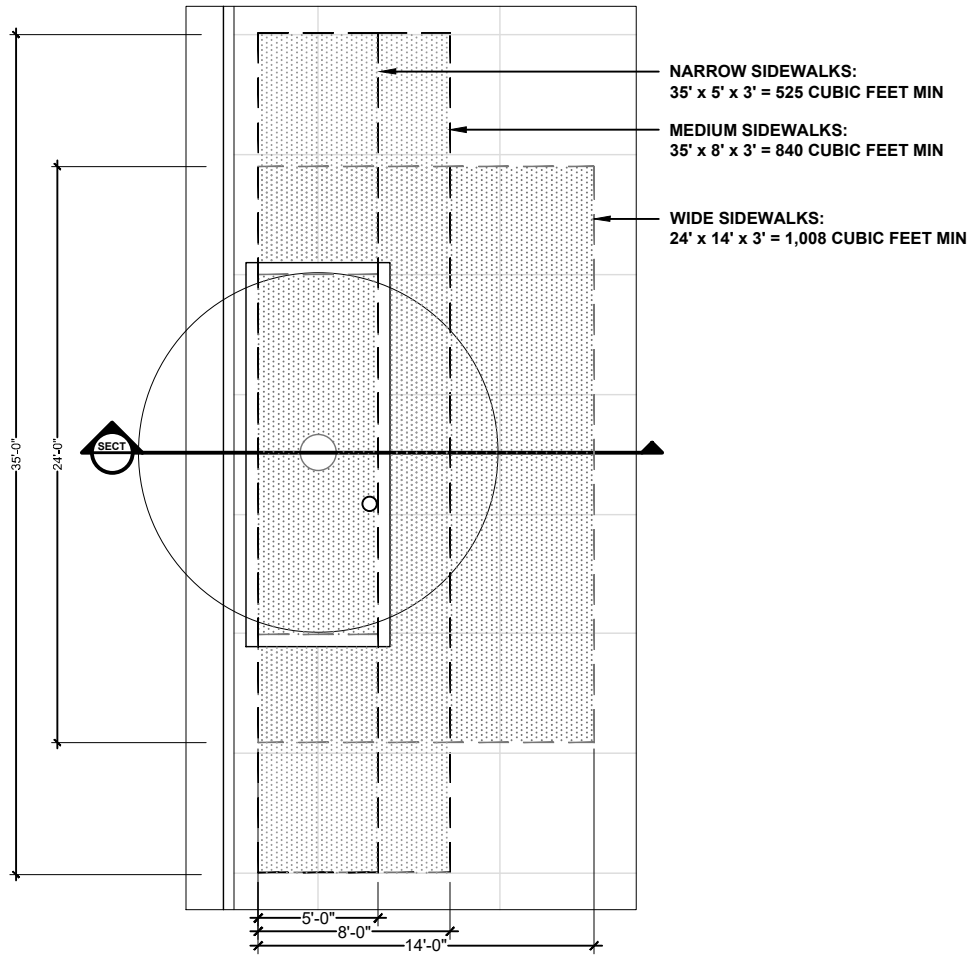


NOTES:

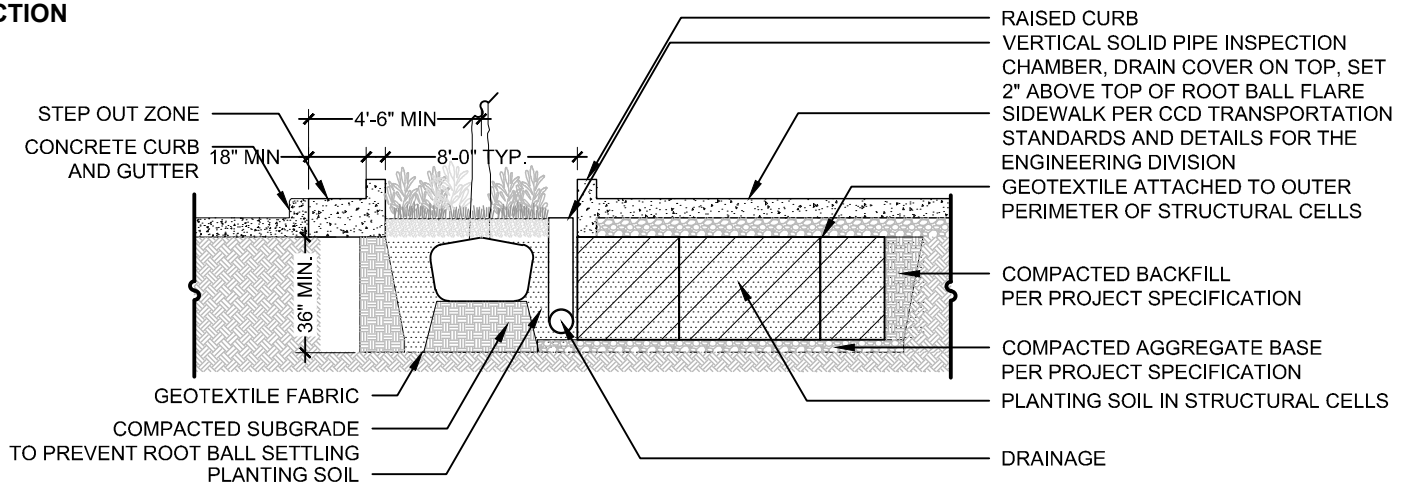
- STRUCTURAL CELL IS FOR REPRESENTATION PURPOSES ONLY
- TREE PLANTING PER OFFICE OF THE CITY FORESTER STANDARDS AND SPECIFICATIONS
- CONCRETE JOINTING AND SCORING OUTSIDE OPEN PLANTING AREA SHALL BE COORDINATED WITH DOTI FIELD STAFF
- STRUCTURAL CELL SOLUTIONS REQUIRE DOTI TIER II ENCROACHMENT REVIEW
- FOR ALL NEW INSTALLATIONS, AUTOMATIC IRRIGATION SYSTEMS SHALL BE PROVIDED
- INSTALLATION MAY BE IMPACTED BY THE PRESENCE OF PUBLIC OR PRIVATE UTILITIES, AND NOTHING IN THESE DETAILS SHALL SUPERCEDE UTILITY REQUIREMENTS
- TREE GRATES ARE NOT TO BE INCLUDED AS PART OF THE PAR, PER TS+D DWG 5.0, NOTE 3.

| | | |
|--|--|------------------|
| | City and County of Denver Soil Volume Toolkit | Date: 04/05 |
| | TREE GRATE WITH ADJACENT PLANTING AREA | Std. Dwg. 1.5 |

PLAN



SECTION

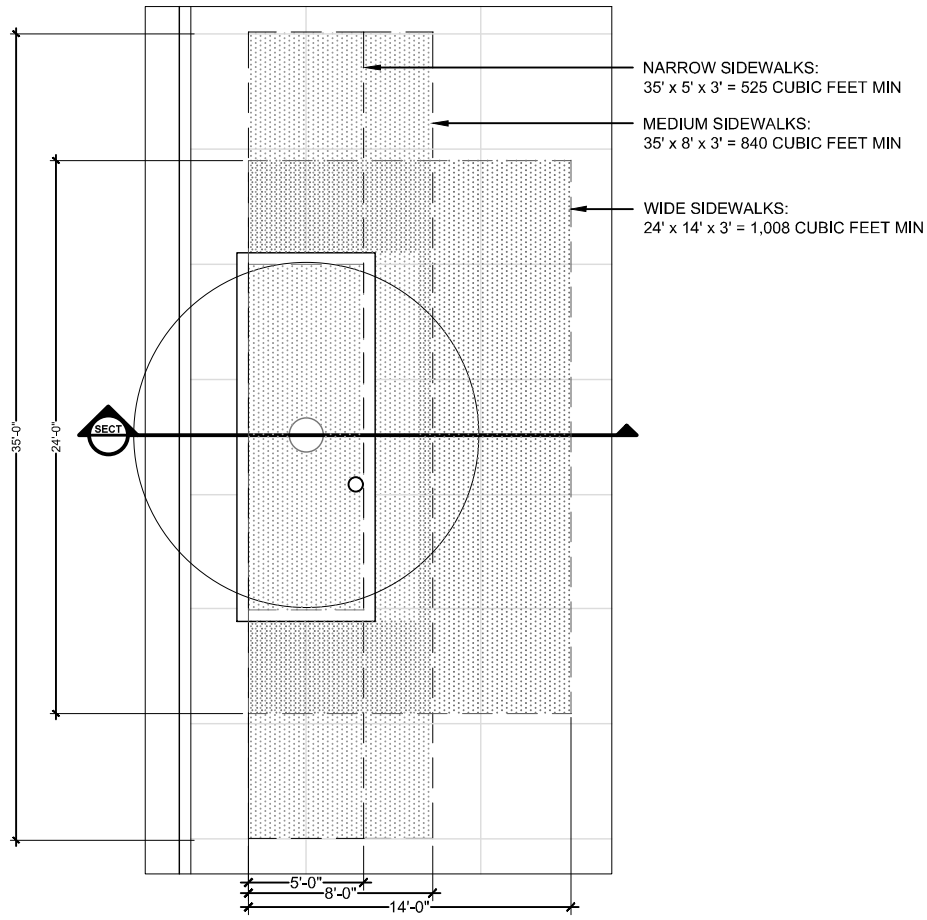


NOTES:

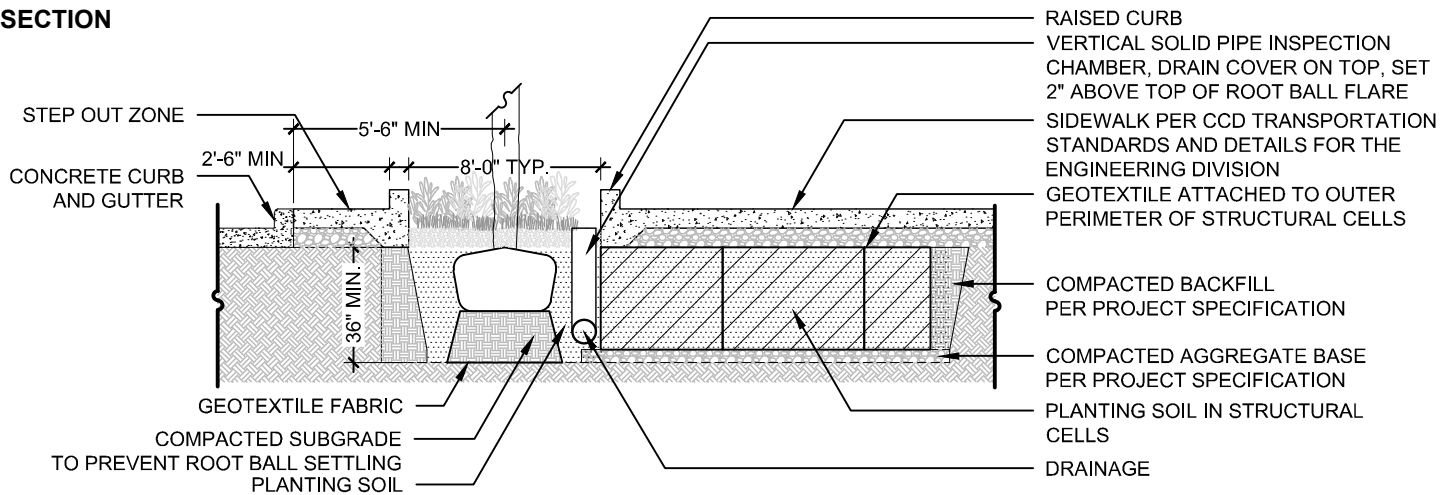
- STRUCTURAL CELL IS FOR REPRESENTATION PURPOSES ONLY
- TREE PLANTING PER OFFICE OF THE CITY FORESTER STANDARDS AND SPECIFICATIONS
- CONCRETE JOINTING AND SCORING OUTSIDE OPEN PLANTING AREA SHALL BE COORDINATED WITH DOTI FIELD STAFF
- STRUCTURAL CELL SOLUTIONS REQUIRE DOTI TIER II ENCROACHMENT REVIEW
- FOR ALL NEW INSTALLATIONS, AUTOMATIC IRRIGATION SYSTEMS SHALL BE PROVIDED
- INSTALLATION MAY BE IMPACTED BY THE PRESENCE OF PUBLIC OR PRIVATE UTILITIES, AND NOTHING IN THESE DETAILS SHALL SUPERCEDE UTILITY REQUIREMENTS
- TREE GRATES ARE NOT TO BE INCLUDED AS PART OF THE PAR, PER TS+D DWG 5.0, NOTE 3.

| | | |
|--|--|--------------------------|
| | <p>City and County of Denver Soil Volume Toolkit</p> | <p>Date: 04/05</p> |
| | <p>OPEN PLANTING AREA NO PARKING (8' MAXIMUM)</p> | <p>Std. Dwg. 1.6</p> |

PLAN



SECTION



NOTES:

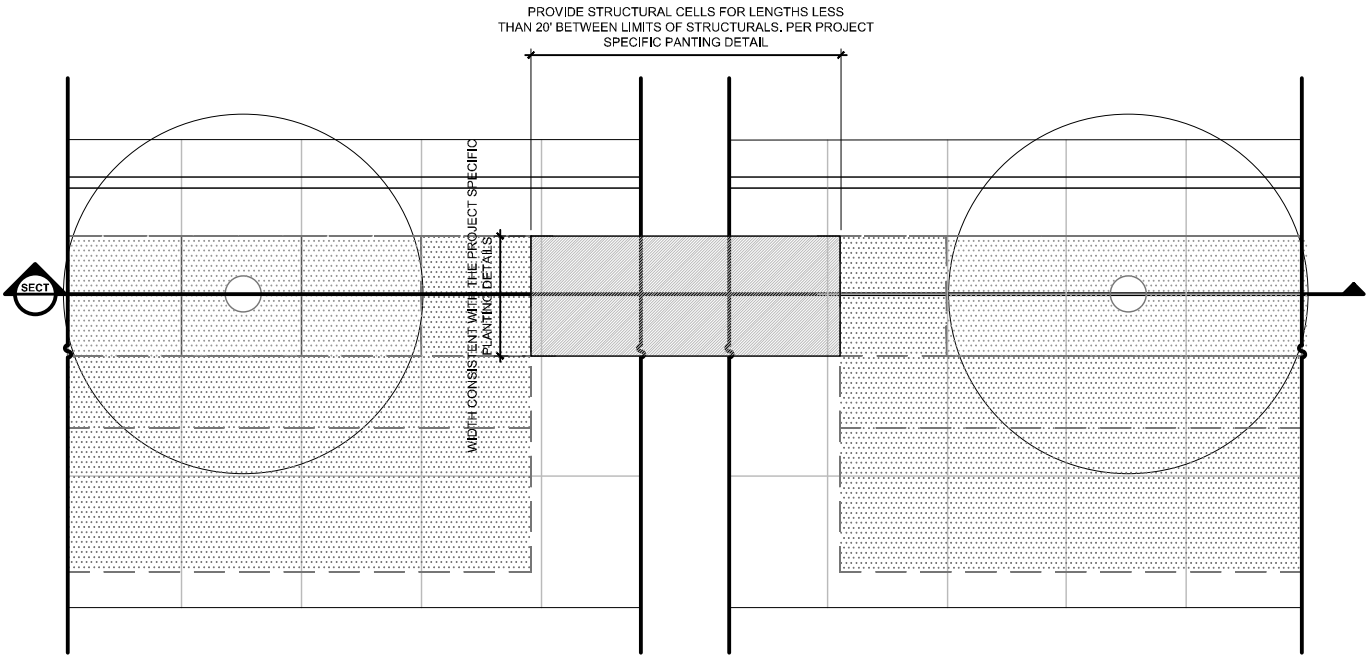
- STRUCTURAL CELL IS FOR REPRESENTATION PURPOSES ONLY
- TREE PLANTING PER OFFICE OF THE CITY FORESTER STANDARDS AND SPECIFICATIONS
- CONCRETE JOINTING AND SCORING OUTSIDE OPEN PLANTING AREA SHALL BE COORDINATED WITH DOTI FIELD STAFF
- STRUCTURAL CELL SOLUTIONS REQUIRE DOTI TIER II ENCROACHMENT REVIEW
- FOR ALL NEW INSTALLATIONS, AUTOMATIC IRRIGATION SYSTEMS SHALL BE PROVIDED
- INSTALLATION MAY BE IMPACTED BY THE PRESENCE OF PUBLIC OR PRIVATE UTILITIES, AND NOTHING IN THESE DETAILS SHALL SUPERCEDE UTILITY REQUIREMENTS
- TREE GRATES ARE NOT TO BE INCLUDED AS PART OF THE PAR, PER TS+D DWG 5.0, NOTE 3.

City and County of Denver
Soil Volume Toolkit

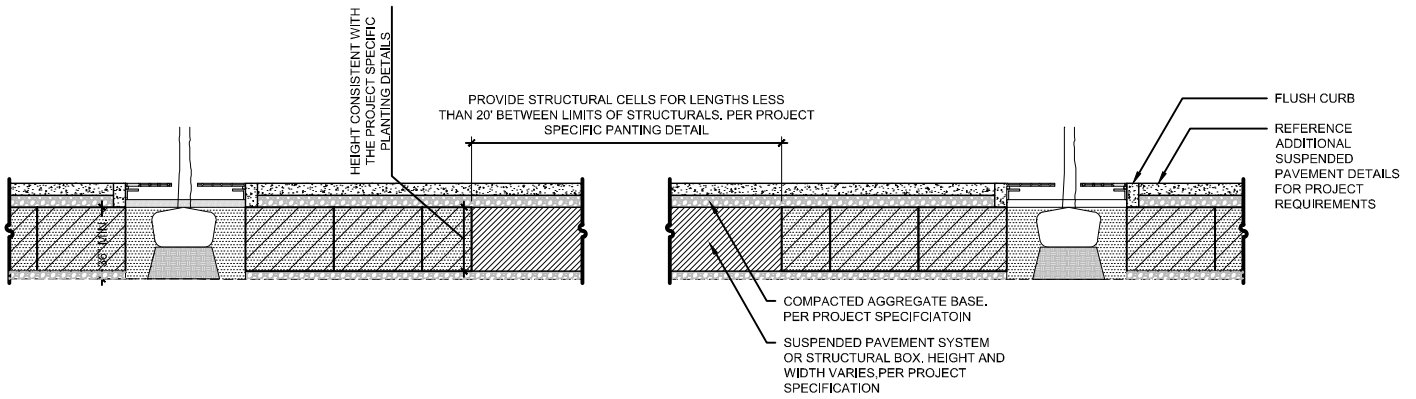
Date:
04/05

OPEN PLANTING AREA (PARKING – 8'
MAXIMUM)

Std. Dwg.
1.7



PLAN
 DETAIL 1.1 IS USED AS BASIS OF DESIGN



- NOTES:
- STRUCTURAL CELL IS FOR REPRESENTATION PURPOSES ONLY
 - TREE PLANTING PER OFFICE OF THE CITY FORESTER STANDARDS AND SPECIFICATIONS
 - CONCRETE JOINTING AND SCORING OUTSIDE OPEN PLANTING AREA SHALL BE COORDINATED WITH PW FIELD STAFF
 - STRUCTURAL SOLUTIONS REQUIRE DOTI TIER II ENCROACHMENT REVIEW
 - FOR ALL NEW INSTALLATIONS, AUTOMATIC IRRIGATION SYSTEMS SHALL BE PROVIDED
 - INSTALLATION MAY BE IMPACTED BY THE PRESENCE OF PUBLIC OR PRIVATE UTILITIES, AND NOTHING IN THESE DETAILS SHALL SUPERCEDE UTILITY REQUIREMENTS
 - TREE GRATES ARE NOT TO BE INCLUDED AS PART OF THE PAR, PER TS+D DWG 5.0, NOTE 3.

SECTION

| | | |
|--|--|------------------|
| | City and County of Denver Soil Volume Toolkit | Date: 04/05 |
| | TREE BRIDGING | Std. Dwg. 1.8 |