

# B Bannock Street Bikeway

**Between Speer Boulevard and Colfax Avenue**  
Includes partial vehicle closure and a high-comfort bikeway.

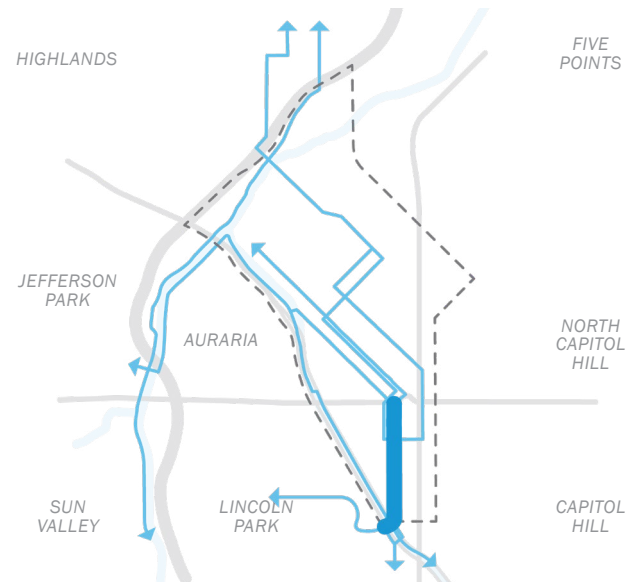
Bannock Street is proposed as both a place to hold festivals and as a bicycle gateway to downtown and the Civic Center from the Cherry Creek Trail. The street is closed to vehicular traffic north of 14th Avenue, and high-comfort bikeways are added the length of the corridor.

## Project Significance

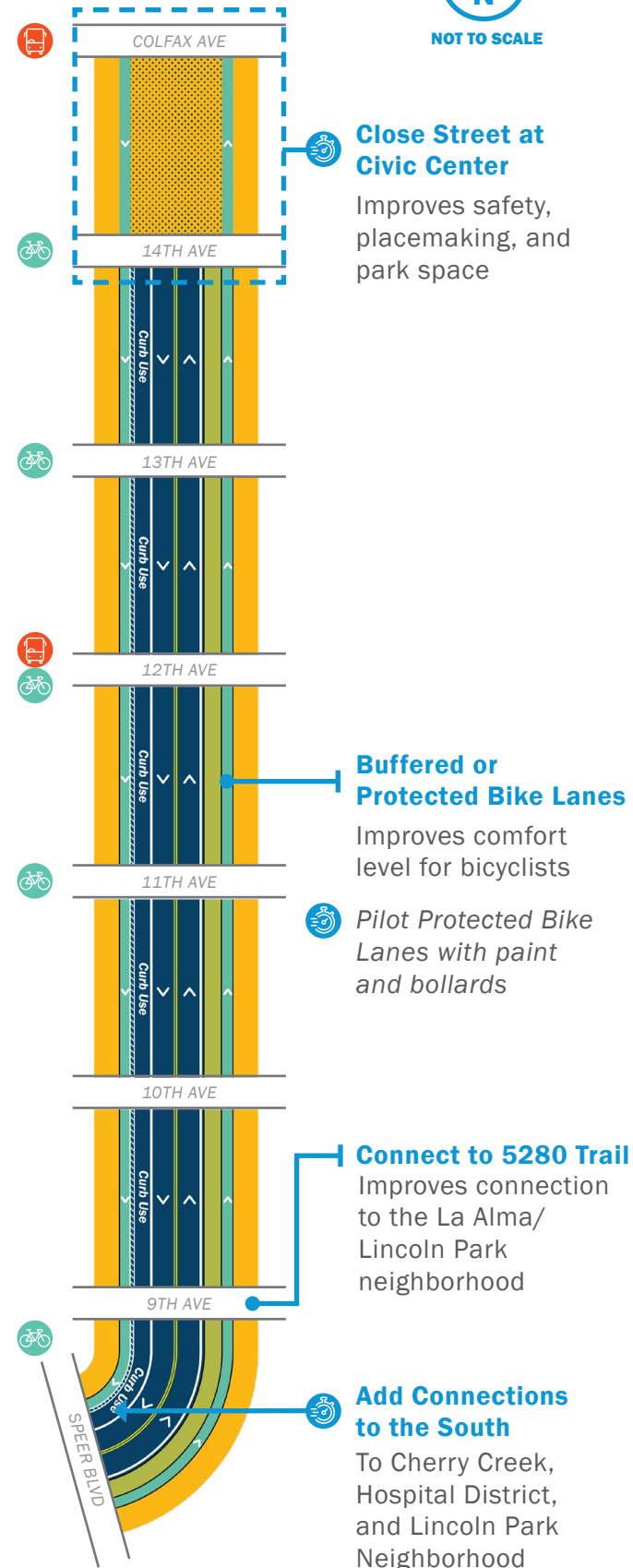
This project connects downtown and the Golden Triangle and expands multimodal access to important cultural and civic destinations.

The Golden Triangle is undergoing a renaissance as a cultural and residential urban centerpiece. This project makes the neighborhood more walkable and bike-friendly while providing a critical connection to the regional trail network.

## Transit and Bike Connections



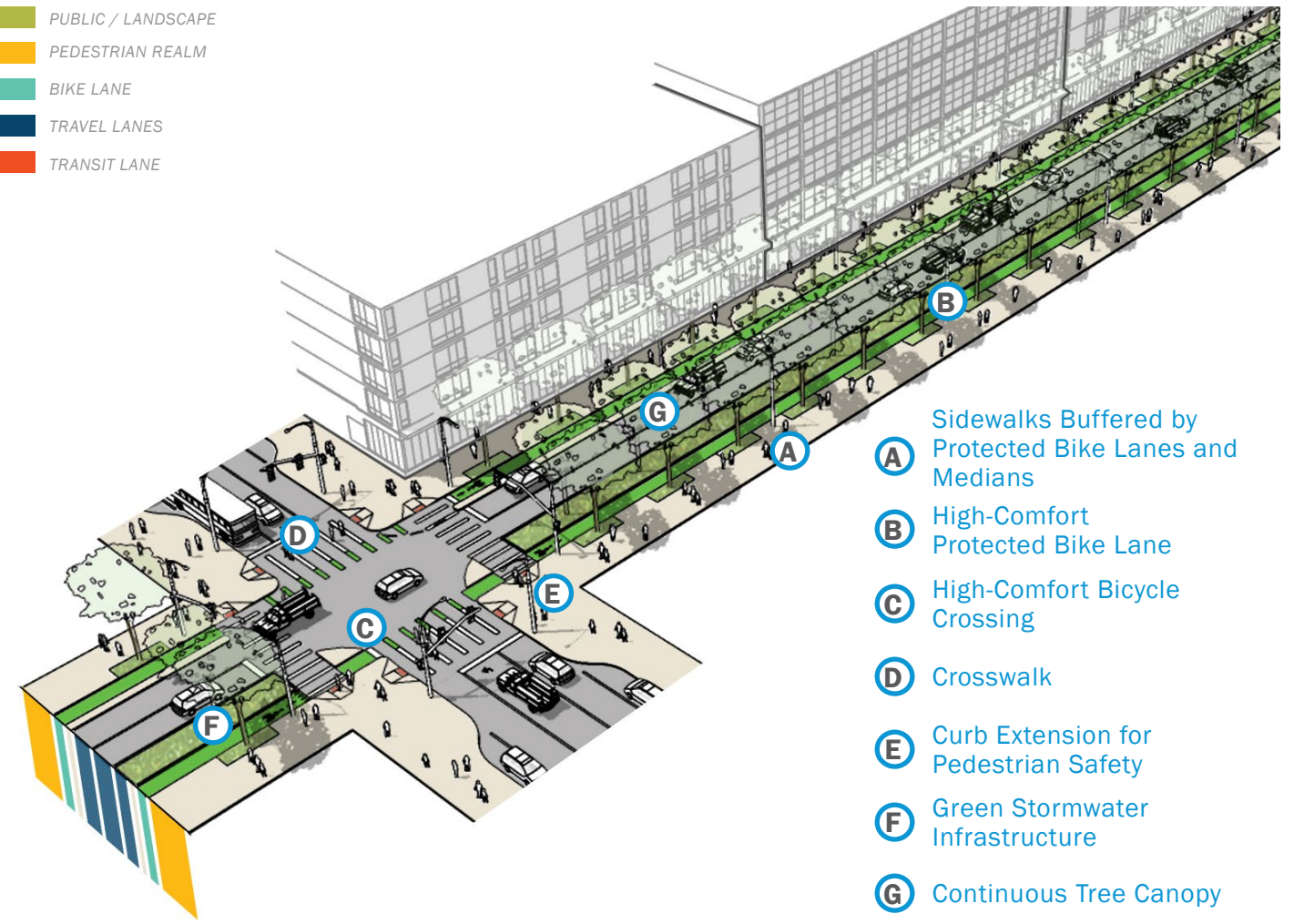
## Bannock Street Corridor



NOT TO SCALE

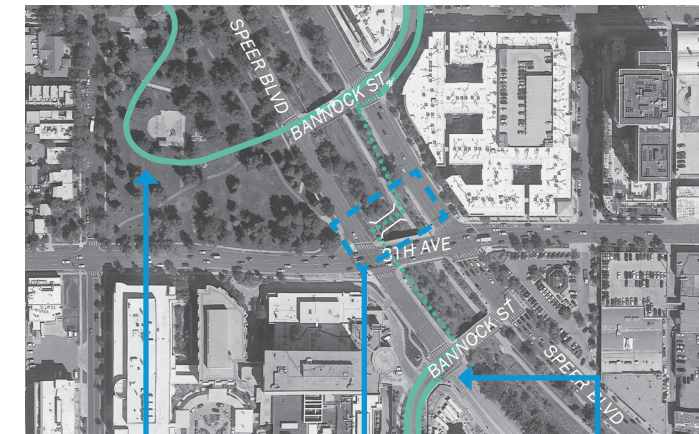
## Typical Block Layout

- PUBLIC / LANDSCAPE
- PEDESTRIAN REALM
- BIKE LANE
- TRAVEL LANES
- TRANSIT LANE



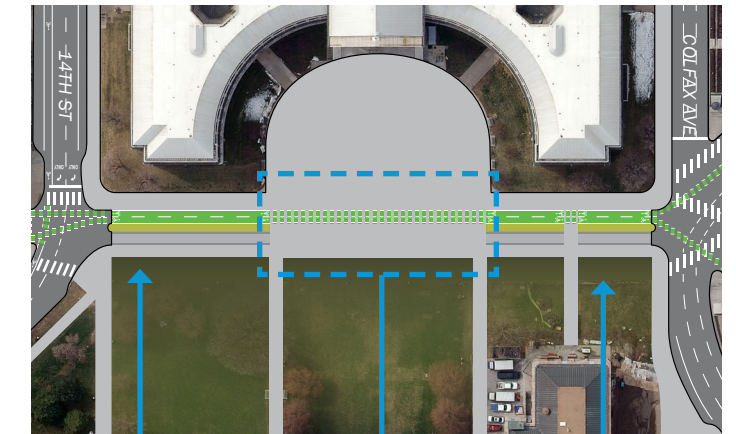
- A** Sidewalks Buffered by Protected Bike Lanes and Medians
- B** High-Comfort Protected Bike Lane
- C** High-Comfort Bicycle Crossing
- D** Crosswalk
- E** Curb Extension for Pedestrian Safety
- F** Green Stormwater Infrastructure
- G** Continuous Tree Canopy

## Cherry Creek Connections



- Lincoln Park Connection
- New Bridge
- Hospital District Connection

## Closure at Civic Center



- Additional Planting
- Central Plaza
- Limited Access Road