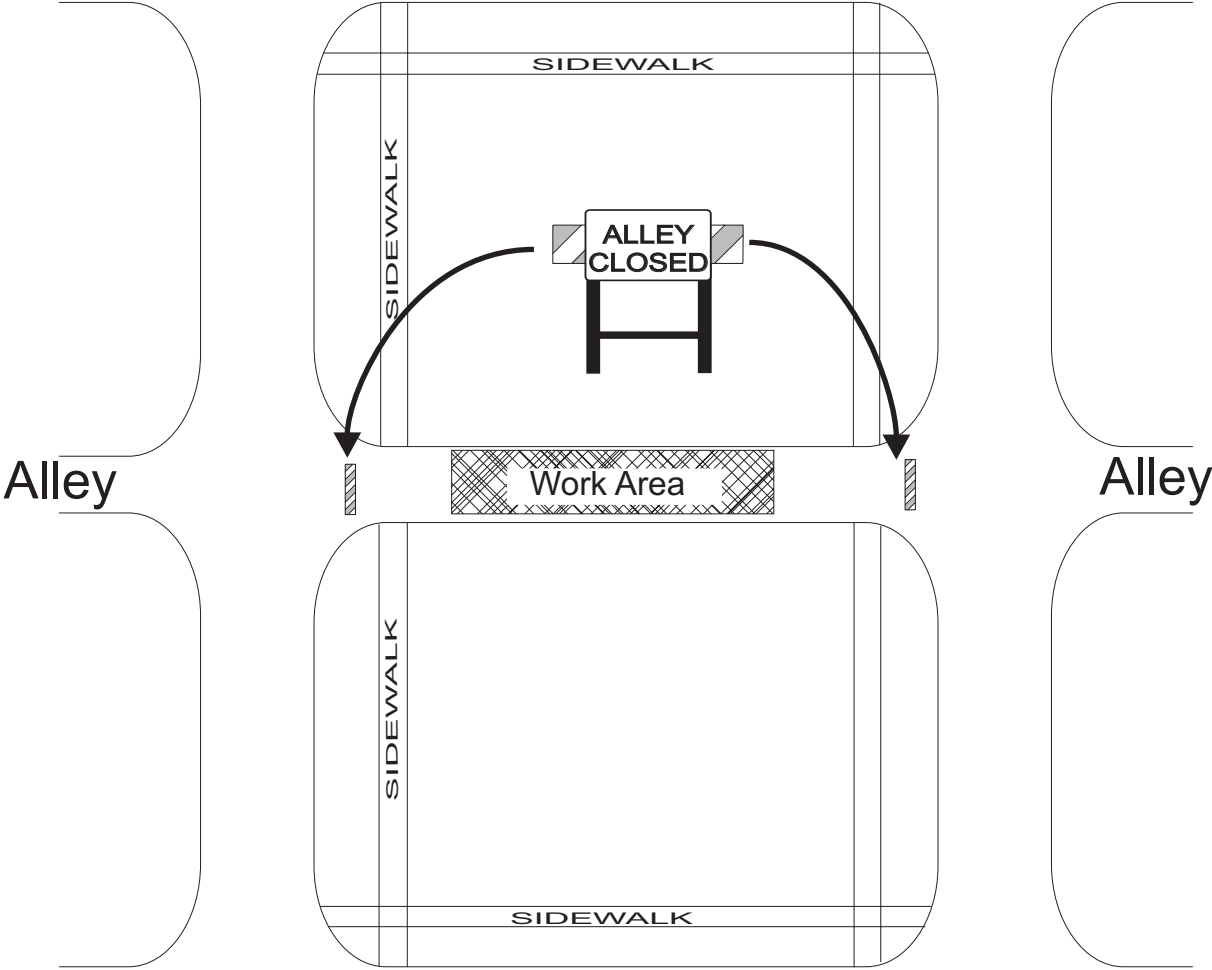


*Contractor must resolve all local access and safety issues.

*Contractor must give notice to all local residents and businesses prior to alley closure.

*All barricades, cones, and signs must be in accordance with the latest edition of the Manual on Uniform Traffic Control Devices.




Indicate North On Plan

Do not block or encumber sidewalks at any time

Drawing Not to Scale

Authorized For Use on Residential Streets

 <p>DENVER THE MILE HIGH CITY</p>	<p>City and County of Denver Department of Transportation & Infrastructure</p>
<p>Alley - Full Closure</p>	
<p>All Alleys</p>	
<p>Revised 9/28/2022</p>	