

**DESIGN DETAILS**



Slab seat walls adjacent to planted beds



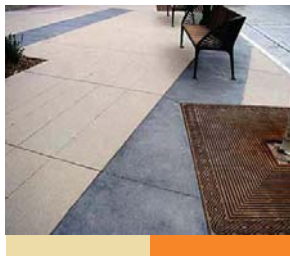
Planter beds adjacent to sidewalks with adjacent seating



Varied levels and sources of night-time lighting create variety and interest along the after-dark streetscape



Pedestals for public art can double as seating areas until pieces are installed (a metal welding plate allows for rotation of art elements)



Scored and sand-finished concrete sidewalks are the standard



Seatwalls can be used to channel stormwater into adjacent planted beds



Open and airy trees - seat wall detailing



Intersection bulb-outs increase pedestrian safety and provide areas for outdoor seating, planters and light poles

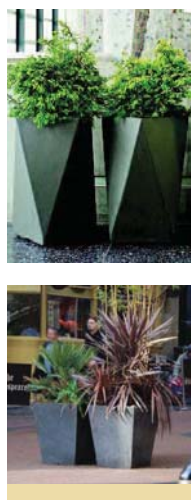
**SITE FURNISHINGS**



LED pedestrian lights are energy-efficient, low-maintenance, dimmable, night-sky friendly and are designed to protect the light source from hail damage, high winds and environmental exposure



City standard 'puck' light will replace existing cobra-head fixtures



Planter pots with a small footprint provide areas for color



Artistic and durable tree grates increase the walkable surface area of the street, while still providing a healthy place for trees to grow



Bike racks provide safe areas to store bikes and promote local neighborhood access



Slim-profile trash and recycling bins are made of recycled and powder-coated aluminium and polyethylene (all streetscape furnishings from this line can be fabricated in a range of colors and finishes - the final design will reflect local preferences)

