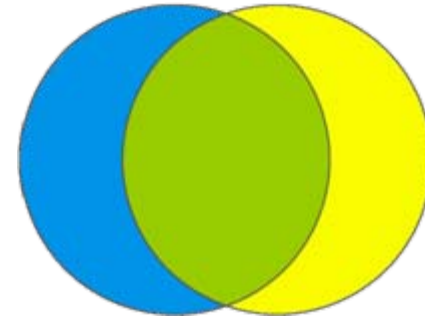


The
Transition from Jail to Community
Project



Screening, Assessment, Treatment, Timing, Application

Web X Presentation – Urban Institute/NIC

Gary E. Christensen, Ph. D.

Corrections Partners, Inc.

Kevin Warwick, MSW

Alternative Solutions

Associates, Inc.

April 10, 2009

Jurisdictional Discussion

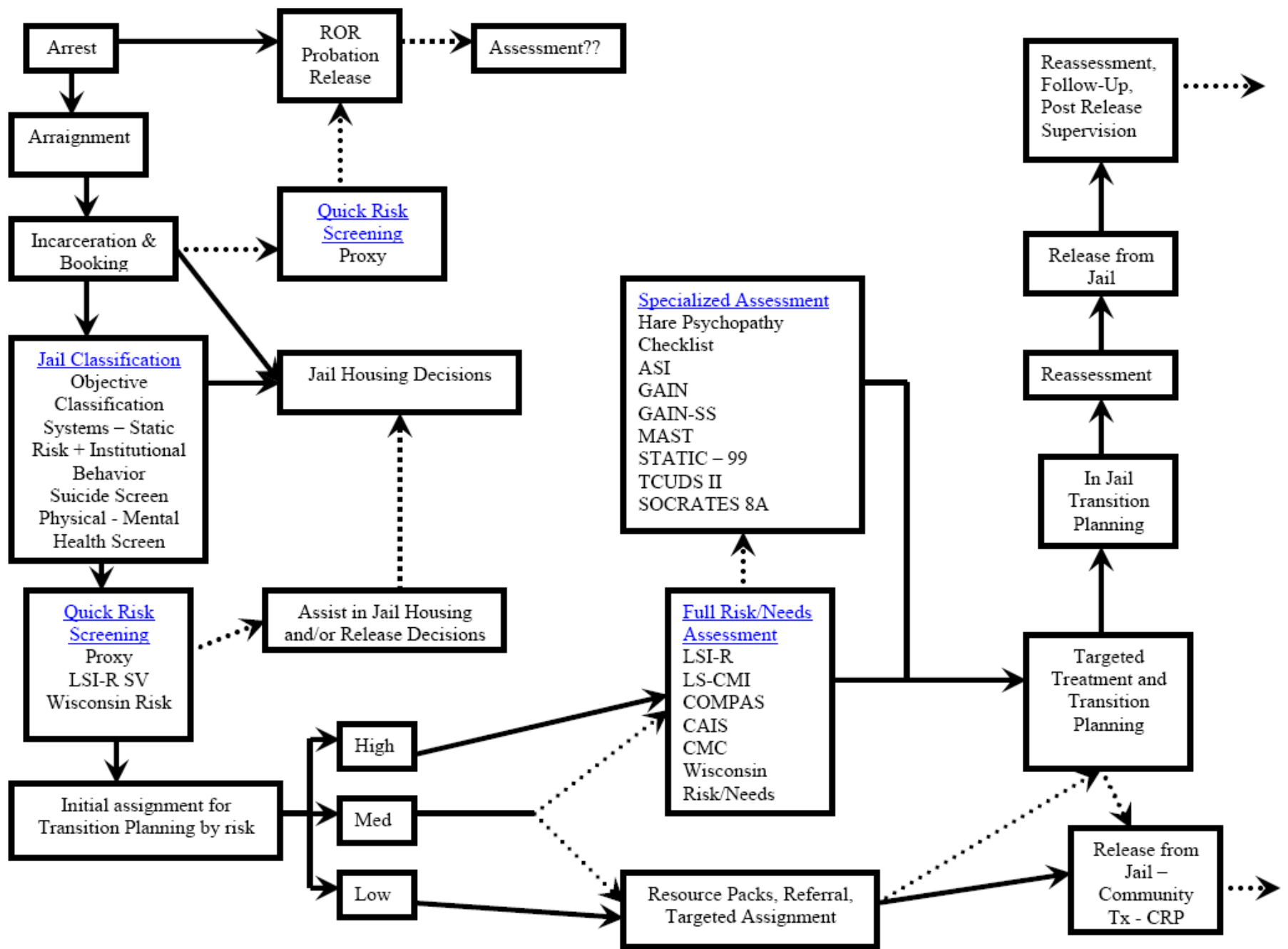
Who do you assess?

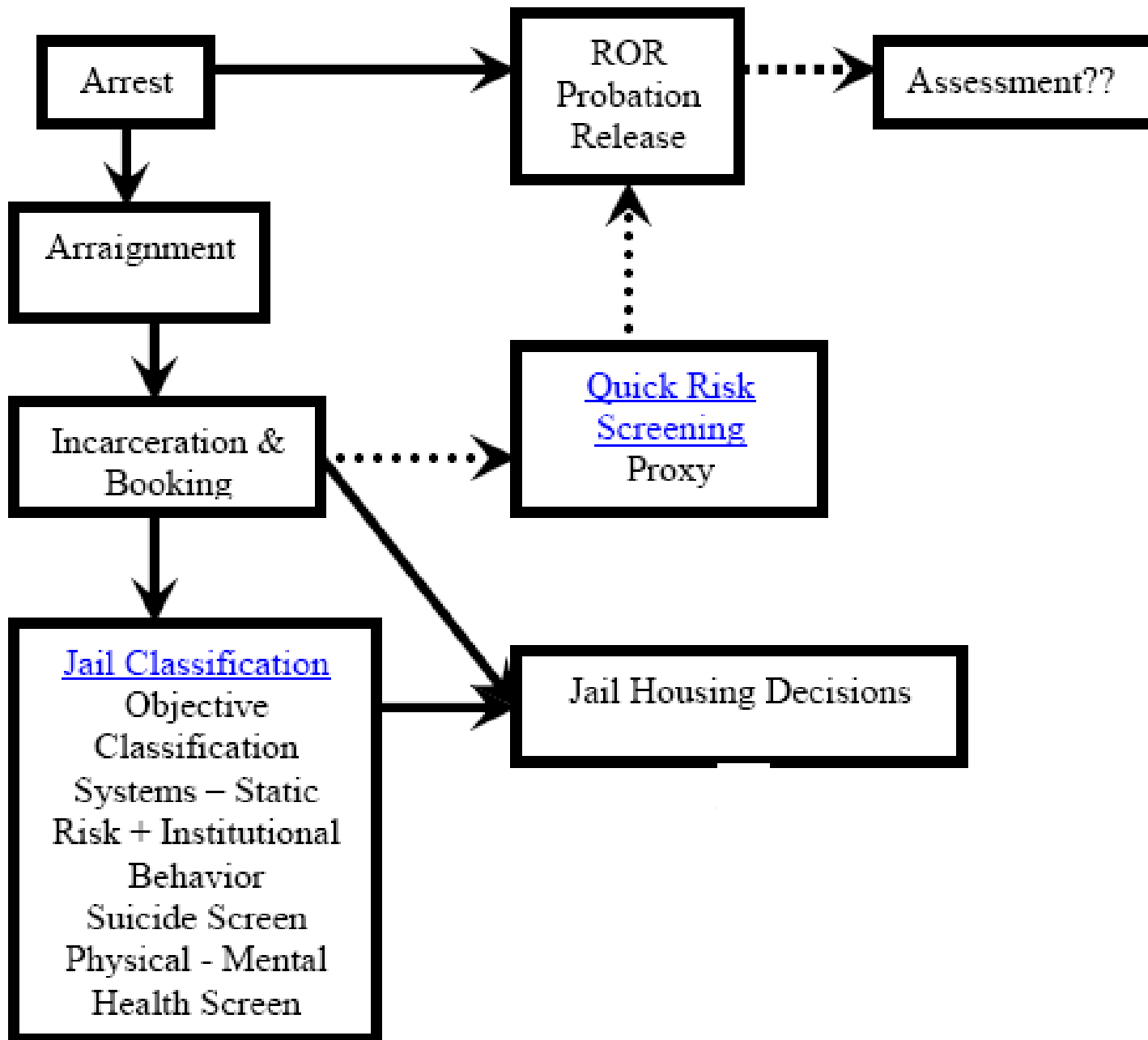
When do you assess them?

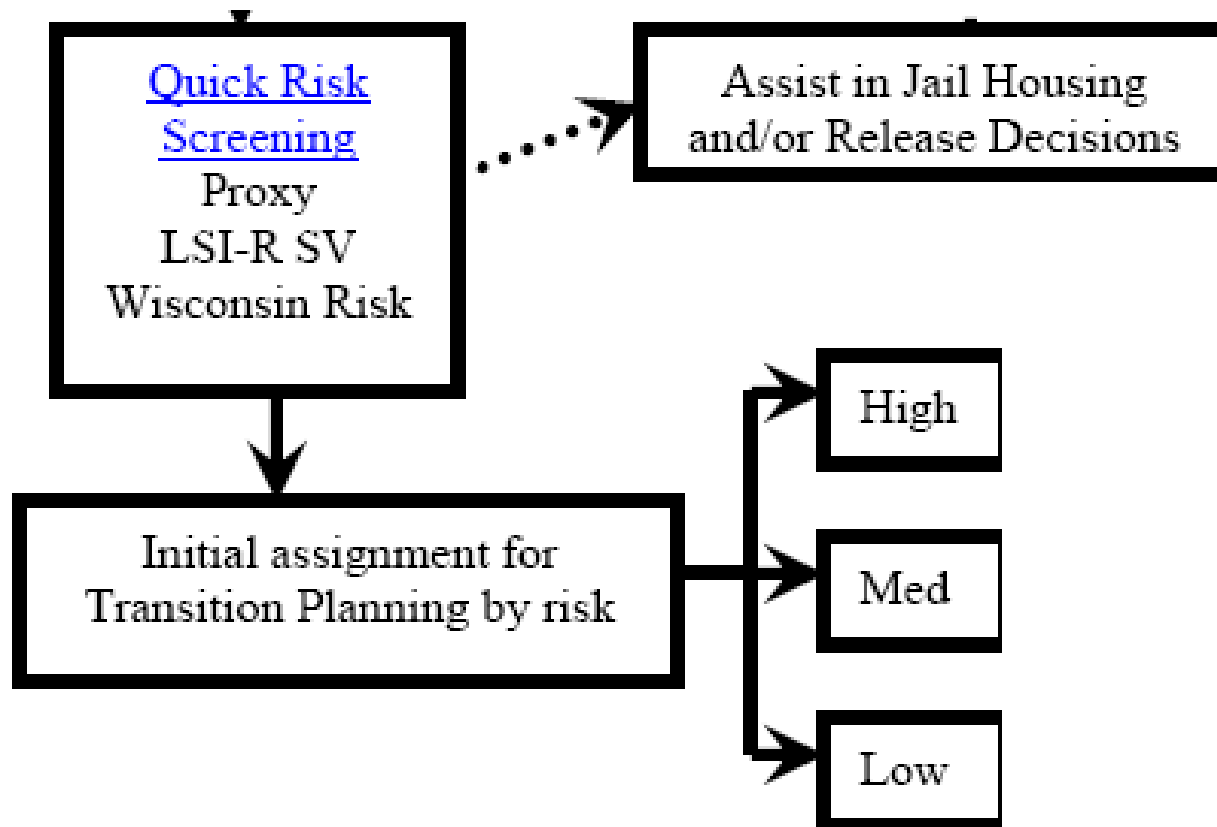
Who does the assessment?

What does the assessment tell us?

What resource\$ will we need?

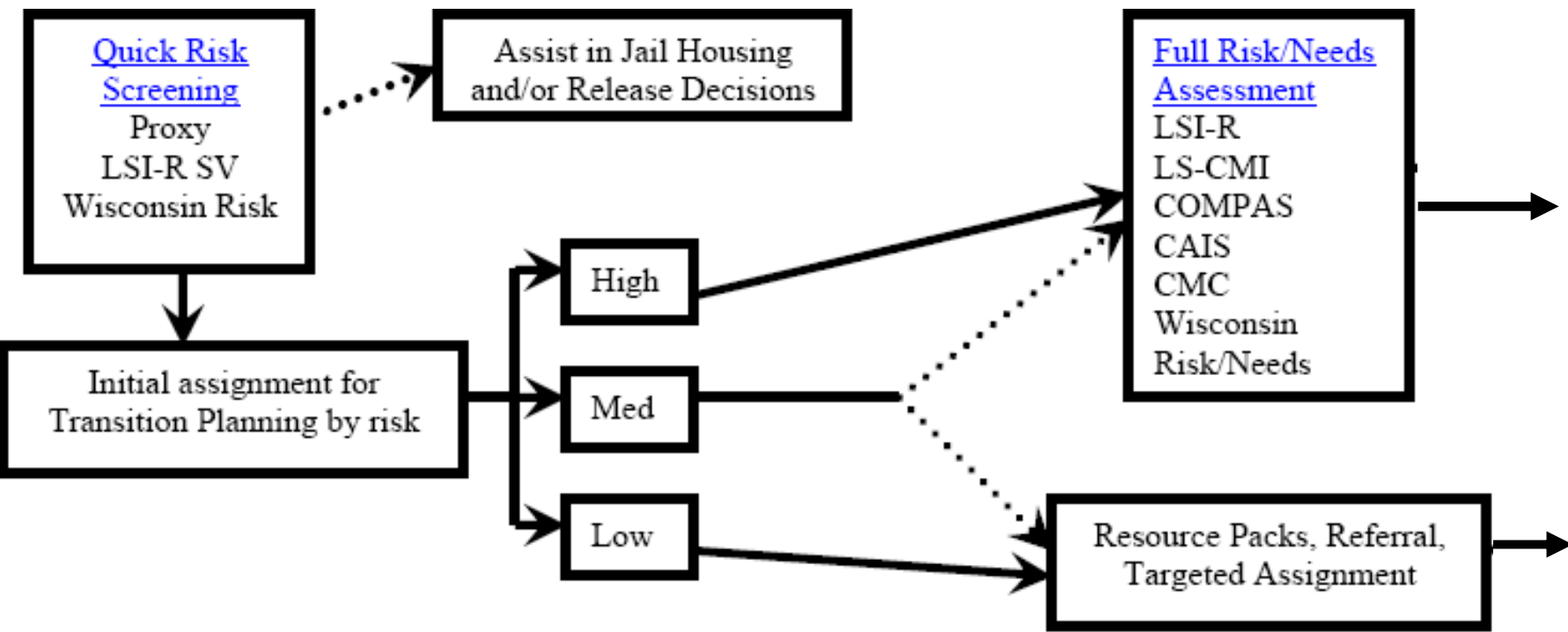






Universal Screening Tools

Quick Risk Screening (Purpose: Screening out lower risk offenders to prevent the inefficient expenditure of time and resources on more extensive assessment or programming)					
Tool Name	Cost	Time to Complete Interview	Inventory Items	Instrument Result	Additional Information
Proxy Risk Triage Screener (Proxy)	No Cost	5 minutes or less	<ul style="list-style-type: none"> • Current age • Age at First Arrest • # of priors 	Risk of recidivism on 8 point scale	j-sat.com
Level of Service Inventory— Revised Screening Version (LSI-R SV)	Excluding start-up cost \$2.20/use	15 Minutes	8 items-Criminal History Education/Employment Family/Marital, Companions, Alcohol/Drug Problems, Attitudes/Orientation, Personal/Emotional	Risk score on an 8 point scale and brief summary of dynamic risk areas that may need attention	mhs.com
Wisconsin Risk	No Cost	15-30 Minutes	11 items	Risk of recidivism score	Available by PDF

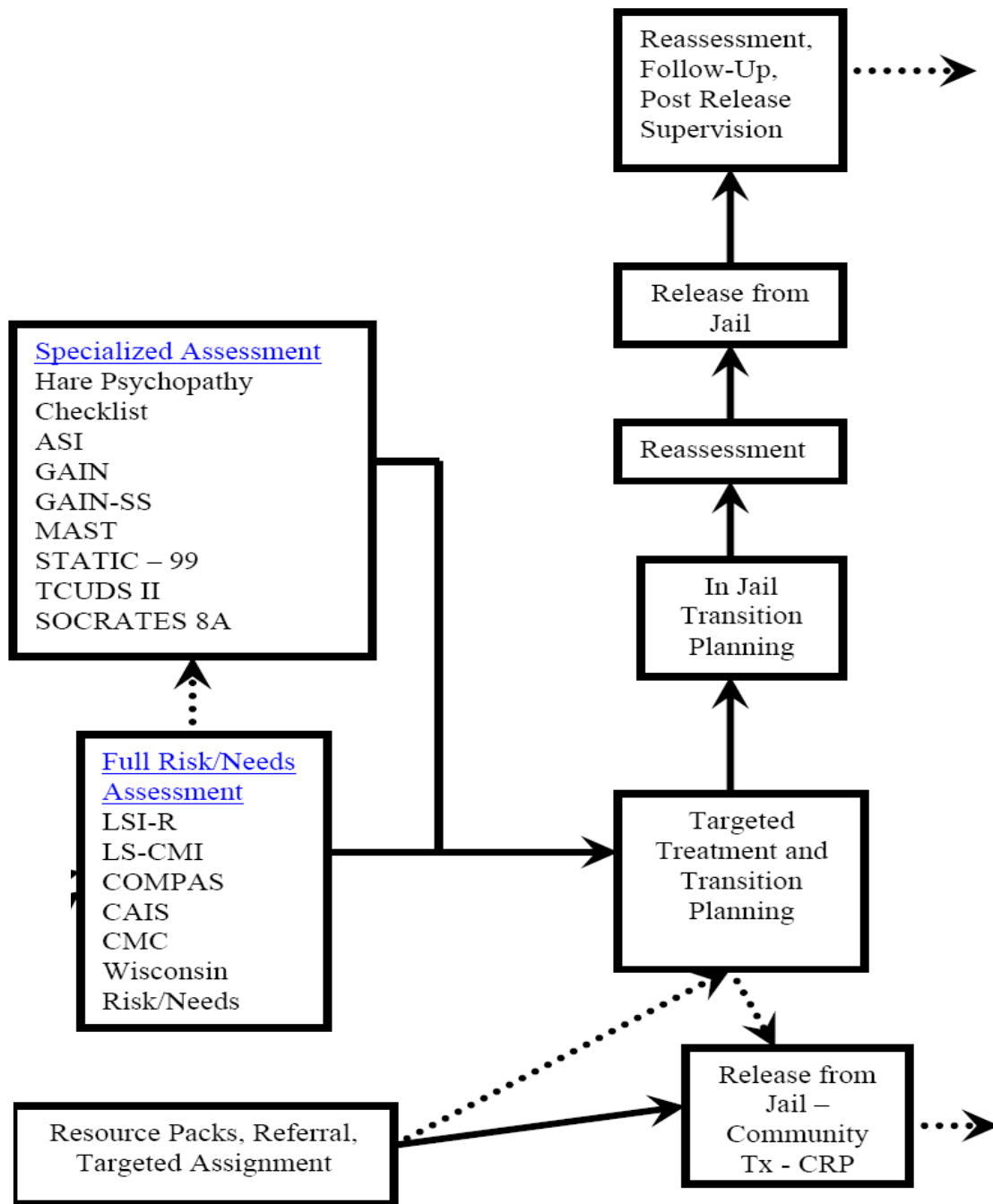


Criminogenic Risk/Needs Assessment (Purpose: A full actuarial assessment of offender Risk/Needs identifying treatment targets. Should be used both to determine who receives priority for services, and what services they receive.)

Tool Name	Cost	Time to Complete Interview	Inventory Items	Instrument Result	Additional Information
Level of Service Inventory– Revised (LSI-R)	Excluding start-up cost \$2.20/use	60 Minutes	54 Item Inventory – Interview	Total Risk/Need score and 10 sub-domain scores	mhs.com
Level of Service/Case Management Inventory (LS-CMI)	Excluding start-up cost \$2.20/use	120-180 Minutes	124 Item Inventory – Interview Risk, Needs, Responsivity, Case and Release Planning	Risk/Needs score, responsivity score, generates plan for case management	mhs.com
Correctional Offender Management Profiles for Alternative Sanctions (COMPAS)	Excluding start-up cost Per user fee of approx. \$225/user/year	90 Minutes	98 Item - Interview Risk, Needs, Responsivity, Case and Release Planning	Risk/Needs score and plan for case management	http://www.northpointeinc.com
Wisconsin Risk/Needs	No Cost	60 Minutes	23 Items - Interview	Risk/Needs Score	Available by PDF

Criminogenic Risk/Needs Assessment (Purpose: A full actuarial assessment of offender Risk/Needs identifying treatment targets. Should be used both to determine who receives priority for services, and what services they receive.)

Tool Name	Cost	Time to Complete Interview	Inventory Items	Instrument Result	Additional Information
Client Management Classification (CMC)	No Cost	60 -75 Minutes	71 Items Interview Risk, Needs, Responsivity, Case and Release Planning	Risk/Needs score and suggested plan for case management	http://nicic.org/Library/000532
Correctional Assessment Intervention System (CAIS)	By jurisdiction Software License or Hosted Online	60 – 75 Minutes	82 Items	Risk/Needs score, generates plan for case management	http://mw.nccd-crc.org/nccd/n_cj_cmain.html



Specialized Assessments for Populations that are Dually Diagnosed or have Special Needs (Purpose: To produce detailed information and identifying treatment targets in specific areas of need)

Tool Name	Cost	Time to Complete Interview	Inventory Items	Instrument Result	Additional Information
Hare Psychopathy Checklist– Revised: 2nd Edition PCLR 2 nd ed.	Excluding start-up cost \$3/use	120-180 Minutes	20 Item Inventory + Structured Interview to assess psychopathy	Assessment of Psychopathy	mhs.com
Addiction Severity Index (ASI)	By jurisdiction Software License or Hosted Online	30- 45 Minutes	200 Item – Interview Substance/Alcohol Use	Assessment of substance use related problems in adults to give a better understanding of treatment needs and outcomes	http://www.assessments.com
Global Appraisal of Individual Needs - Short Screener (GAIN-SS)	By jurisdiction Software License or Hosted Online	3-5 Minutes	20 Item – Interview Behavioral Health	Quick screen and identification of clients with one or more behavioral health concerns	http://www.assessments.com
Global Appraisal of Individual Needs – (GAIN)	By jurisdiction Software License or Hosted Online	90-120 Minutes	123 Item – Interview Behavioral Health	Identification of clients with one or more behavioral health concerns	http://www.chestnut.org

Specialized Assessments for Populations that are Dually Diagnosed or have Special Needs (Purpose: To produce detailed information and identifying treatment targets in specific areas of need)

Tool Name	Cost	Time to Complete Interview	Inventory Items	Instrument Result	Additional Information
Michigan Alcohol Screening Test (MAST)	By jurisdiction Software License or Hosted Online	10 Minutes	25 Item – Interview or Self Alcohol Use	Quick screen with quantifiable “yes/no” interview questions to detect alcoholism in adult clients	http://www.assessments.com
STATIC-99	By jurisdiction Software License or Hosted Online	15-30 Minutes	10 Item – Interview Sexual Offense	Probability of sexual and violent recidivism among adult males who have already been convicted of at least one sexual offense	http://www.assessments.com
TCU Drug Screen II (TCUDS II)	By jurisdiction Software License or Hosted Online	5 Minutes	15 Item – Interview or Self Substance/Alcohol Use	Screening tool that helps identify individuals with a history of heavy drug use or dependency	http://www.assessments.com
Stages of Change Readiness and Treatment Eagerness Scale (SOCRATES 8A)	No Cost	5-10 Minutes	19 Item – Self Administered Readiness for Change - Alcohol Use	Assessment of motivation and readiness for change	http://www.ncbi.nlm.nih.gov/books/by.fcgi?rid=hstat5.table.62298

Triage by Risk, Need and LOS

Risk/Needs	LOS		
	Short (72 hours or less)	Medium (3-30 days)	Long (31+ days)
Low	-- Info. resources	-- Info. resources --Short course on accessing services	-- Info. resources --Short course on accessing services --Longer course(s) as appropriate (e.g. resume development) --In-housing programming and activities
Medium	-- Info. resources --Short course on accessing services --Referrals to specific providers based on screening	-- Info. resources --Short course on accessing services --Possibly make referrals to specific providers based on screening	-- Info. resources -- Full assessment -- Individual transition/case plan --In-house programming and treatment as necessary --Tailored discharge plan --Referrals and appointments with community providers
High	-- Info. resources --Short course on accessing services --Referrals to specific providers based on screening --possibly schedule appointments	-- Info. resources --Short course on accessing services --Referrals to specific providers based on screening -- Schedule appointments -- Tailored discharge plan	-- Info. resources -- Full assessment -- Individual transition/case plan --In-house intensive programming and treatment --In-house case management --Tailored discharge plan --Referrals and appointments with community providers --Post-release service provision --Post-release case management -- Possibly supervision

Evidenced-Based Programming

Research shows that certain areas of treatment show the greatest impact on recidivism rates for inmate populations. Therefore, the following are five major areas of treatment suggestions:

1. Cognitive Behavioral/Life Skills groups (Thinking for a Change)
2. Substance Abuse groups (A New Direction, Matrix Model, etc.)
3. Job Readiness and Employment
4. Educational programs (Learning Center concept)
5. Housing & Community Reintegration Planning

Jurisdictional Discussion

Questions?