

VIRGINIA VILLAGE REPORTED OFFENSES

VIRGINIA VILLAGE

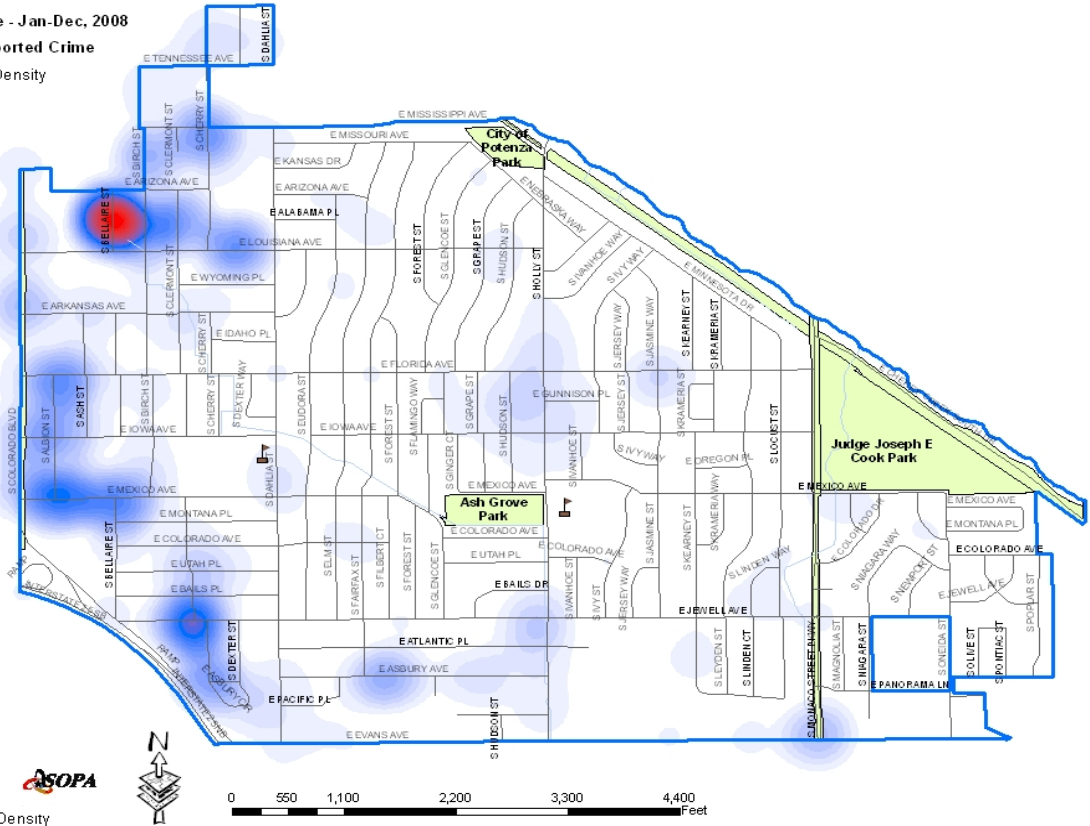
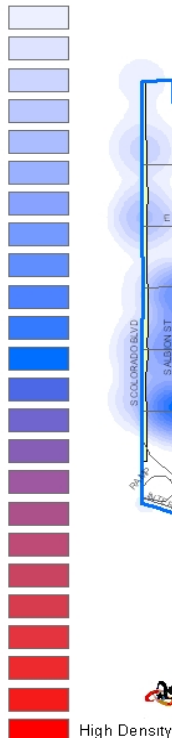
TYPE OF CRIME		Jan-Dec, 2007		Jan-Dec, 2008		CHANGE	
		#	%	#	%	#	%
Part 1 Persons	Homicide	0	0.0%	2	0.4%	2	NA
	Sexual Assault	5	0.8%	8	1.5%	3	60.0%
	Robbery	18	2.8%	16	3.0%	-2	-11.1%
	Aggravated Assault	27	4.2%	21	3.9%	-6	-22.2%
SUBTOTAL		50	7.8%	47	8.7%	-3	-6.0%
Part 1 Property	Burglary	100	15.5%	72	13.4%	-28	-28.0%
	Larceny (Except Theft from Motor Veh)	76	11.8%	80	14.8%	4	5.3%
	Larceny (Theft from Motor Vehicle)	104	16.1%	71	13.2%	-33	-31.7%
	Auto Theft	88	13.6%	51	9.5%	-37	-42.0%
	Arson	0	0.0%	1	0.2%	1	NA
SUBTOTAL		368	57.1%	275	51.0%	-93	-25.3%
<b>PART 1 TOTAL</b>		<b>418</b>	<b>64.8%</b>	<b>322</b>	<b>59.7%</b>	<b>-96</b>	<b>-23.0%</b>
Other Crimes Against Persons	Other Assaults	40	6.2%	33	6.1%	-7	-17.5%
	Other Sex Offenses	8	1.2%	7	1.3%	-1	-12.5%
	Against Family/Child	8	1.2%	12	2.2%	4	50.0%
SUBTOTAL		56	8.7%	52	9.6%	-4	-7.1%
Public Disorder Crimes	Criminal Mischief	84	13.0%	96	17.8%	12	14.3%
	Prostitution and Commercialized Vice	0	0.0%	0	0.0%	0	NA
	Disorderly Conduct	21	3.3%	18	3.3%	-3	-14.3%
SUBTOTAL		105	16.3%	114	21.2%	9	8.6%
Drug and Alcohol	Drug Abuse Violations	15	2.3%	15	2.8%	0	0.0%
	Liquor Law Violations	0	0.0%	0	0.0%	0	NA
SUBTOTAL		15	2.3%	15	2.8%	0	0.0%
White Collar Crimes	Forgery and Counterfeiting	7	1.1%	4	0.7%	-3	-42.9%
	Fraud	29	4.5%	27	5.0%	-2	-6.9%
	Embezzlement	3	0.5%	0	0.0%	-3	-100.0%
SUBTOTAL		39	6.0%	31	5.8%	-8	-20.5%
All Other Crimes	Stolen Property	0	0.0%	0	0.0%	0	NA
	Weapons	1	0.2%	1	0.2%	0	0.0%
	All Other Offenses	11	1.7%	4	0.7%	-7	-63.6%
SUBTOTAL		12	1.9%	5	0.9%	-7	-58.3%
<b>PART 2 TOTAL</b>		<b>227</b>	<b>35.2%</b>	<b>217</b>	<b>40.3%</b>	<b>-10</b>	<b>-4.4%</b>
<b>TOTAL</b>		<b>645</b>	<b>100.0%</b>	<b>539</b>	<b>100.0%</b>	<b>-106</b>	<b>-16.4%</b>

Legend

Virginia Village - Jan-Dec, 2008

Density of Reported Crime

Low Density



All files utilized in the creation of this report are dynamic. Dynamic files allow additions, deletions and/or modifications at any time, resulting in more complete and accurate records in the databases. Due to continuous data entry after reports are compiled, numbers may vary in previous or subsequent reports. Data downloaded 01/07/2009.