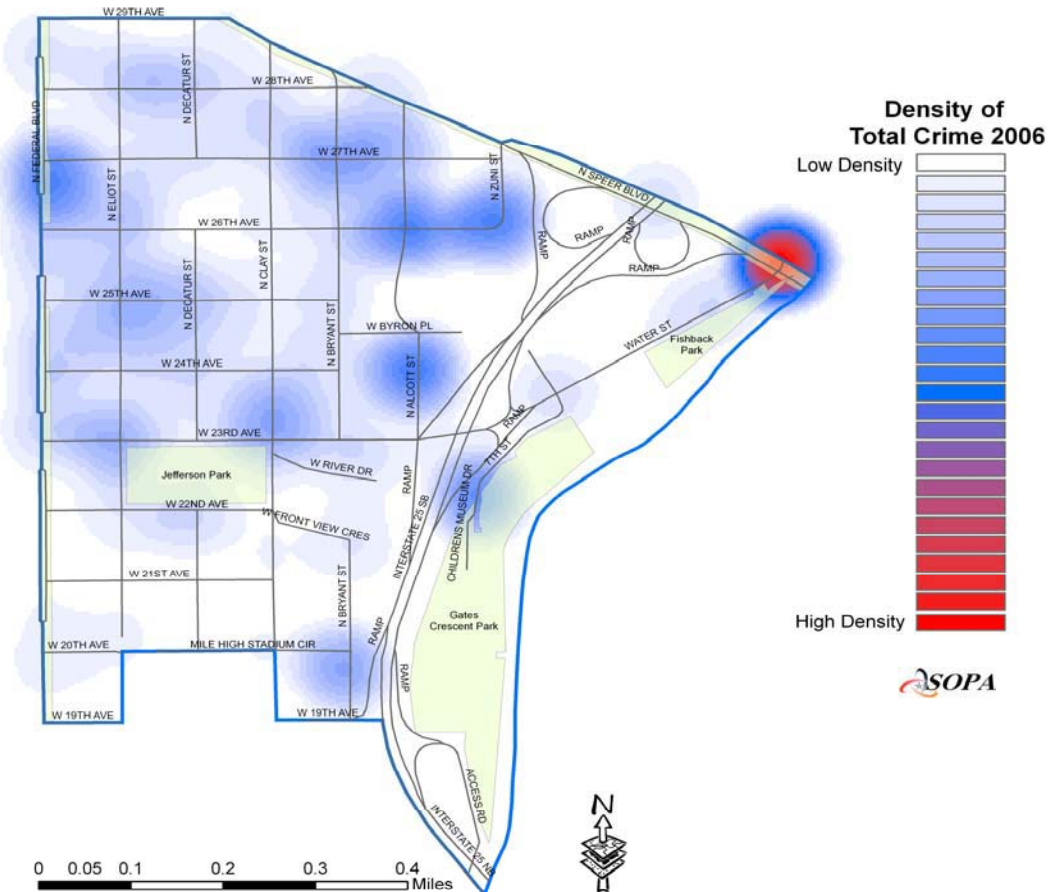


JEFFERSON PARK REPORTED OFFENSES

JEFFERSON PARK

TYPE OF CRIME		2005		2006		CHANGE	
		#	%	#	%	#	%
Part 1 Persons	Homicide	0	0.0%	0	0.0%	0	NA
	Sexual Assault	2	0.5%	3	0.7%	1	50.0%
	Robbery	10	2.5%	12	2.9%	2	20.0%
	Aggravated Assault	16	4.0%	20	4.8%	4	25.0%
SUBTOTAL		28	7.0%	35	8.4%	7	25.0%
Part 1 Property	Burglary	40	10.0%	31	7.5%	-9	-22.5%
	Larceny (Except Theft from Motor Veh)	30	7.5%	55	13.3%	25	83.3%
	Larceny (Theft from Motor Vehicle)	124	31.0%	149	35.9%	25	20.2%
	Auto Theft	65	16.3%	53	12.8%	-12	-18.5%
	Arson	2	0.5%	0	0.0%	-2	-100.0%
SUBTOTAL		261	65.3%	288	69.4%	27	10.3%
PART 1 TOTAL		289	72.3%	323	77.8%	34	11.8%
Other Crimes Against Persons	Other Assaults	14	3.5%	12	2.9%	-2	-14.3%
	Other Sex Offenses	5	1.3%	4	1.0%	-1	-20.0%
	Against Family/Child	4	1.0%	2	0.5%	-2	-50.0%
SUBTOTAL		23	5.8%	18	4.3%	-5	-21.7%
Public Disorder Crimes	Criminal Mischief	42	10.5%	36	8.7%	-6	-14.3%
	Prostitution and Commercialized Vice	1	0.3%	1	0.2%	0	0.0%
	Disorderly Conduct	3	0.8%	4	1.0%	1	33.3%
SUBTOTAL		46	11.5%	41	9.9%	-5	-10.9%
Drug and Alcohol	Drug Abuse Violations	19	4.8%	17	4.1%	-2	-10.5%
	Liquor Law Violations	0	0.0%	0	0.0%	0	NA
SUBTOTAL		19	4.8%	17	4.1%	-2	-10.5%
White Collar Crimes	Forgery and Counterfeiting	8	2.0%	1	0.2%	-7	-87.5%
	Fraud	1	0.3%	10	2.4%	9	900.0%
	Embezzlement	0	0.0%	0	0.0%	0	NA
SUBTOTAL		9	2.3%	11	2.7%	2	22.2%
All Other Crimes	Stolen Property	0	0.0%	1	0.2%	1	NA
	Weapons	4	1.0%	0	0.0%	-4	-100.0%
	All Other Offenses	10	2.5%	4	1.0%	-6	-60.0%
SUBTOTAL		14	3.5%	5	1.2%	-9	-64.3%
PART 2 TOTAL		111	27.8%	92	22.2%	-19	-17.1%
TOTAL		400	100.0%	415	100.0%	15	3.8%



All files utilized in the creation of this report are dynamic. Dynamic files allow additions, deletions and/or modifications at any time, resulting in more complete and accurate records in the databases. Due to continuous data entry after reports are compiled, numbers may vary in previous or subsequent reports. Data downloaded 1/26/07.