

Summary of Remedial Action  
 2007 Denver Radium Streets Project  
 York Street

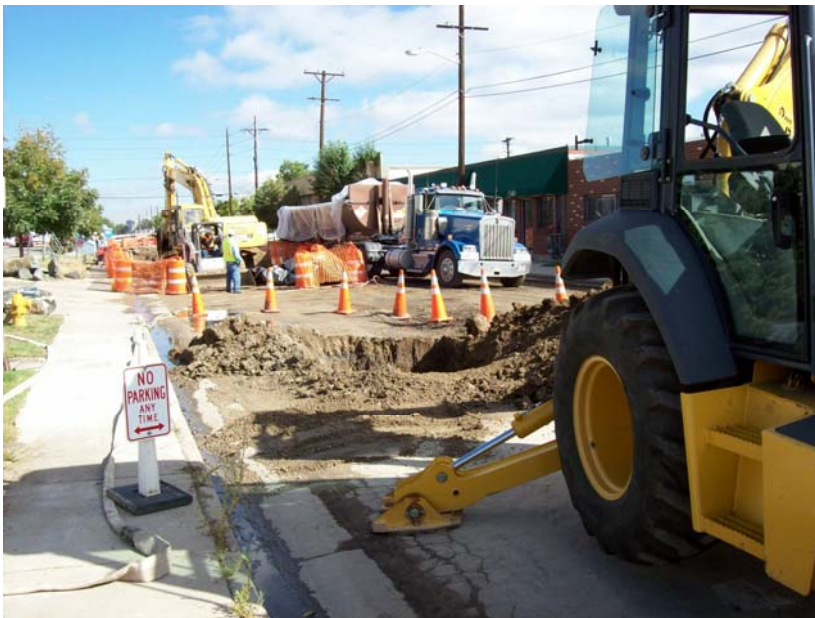
**Daily Project Activities:**

Date	Project Activity
9/24/07	<ol style="list-style-type: none"> <li>1. Conduct daily health and safety meeting;</li> <li>2. Remove and load an estimated 200 tons (10 trucks) of impacted subgrade material. Material is loaded and removed to Clean Harbors disposal facility. Removal work being performed in Phase 1 and 2 West side.</li> <li>3. 6" gas line is located and surrounding material is hand excavated. Gas pipe runs along middle of wets lane.</li> <li>4. Excel Energy is on-site to re-route future gas services to surrounding businesses.</li> </ol>
9/25/07	<ol style="list-style-type: none"> <li>1. Conduct daily health and safety meeting;</li> <li>2. Remove and load an estimated 240 tons (12 trucks) of impacted subgrade material. Material is loaded and removed to Clean Harbors disposal facility. Removal work being performed in Phase 1 and Phase 2 on west half of street.</li> <li>3. Excel Energy is installing new gas line services.</li> </ol>
9/26/07	<ol style="list-style-type: none"> <li>1. Conduct daily health and safety meeting;</li> <li>2. Sample collection of impacted subgrade at water line (P1 West) for further lab analysis of impacted levels.</li> <li>3. Delineating and stockpiling of impacted subgrade material from West Phase1.</li> <li>4. Rebuild driveway access to North West businesses.</li> <li>5. Excel is installing new gas line services.</li> </ol>
9/27/07	<ol style="list-style-type: none"> <li>1. Conduct daily health and safety meeting;</li> <li>2. Remove and load an estimated 160 tons (8 trucks) of impacted subgrade material. Material is loaded and removed to Clean Harbors disposal facility. Removal work being performed in Phase 2 on west half of street. Digging down to three feet until results of soil analysis are returned and approval comes to dig further.</li> <li>3. Excel is installing new gas line services.</li> </ol>
9/28/07	<ol style="list-style-type: none"> <li>1. Conduct daily health and safety meeting;</li> <li>2. No removal activities on site today. Further action is dependent on soil sampling analysis of impacted material around water line.</li> <li>3. Site maintenance and grounds keeping.</li> </ol>

**Photo Log:**



**Excavation of impacted material around gas line.**



**Excel Energy gas line connection location.**



**Rebuilding driveway access to North West businesses.**



**Excavation zone along Phase 1 and Phase 2 of West lane.**