




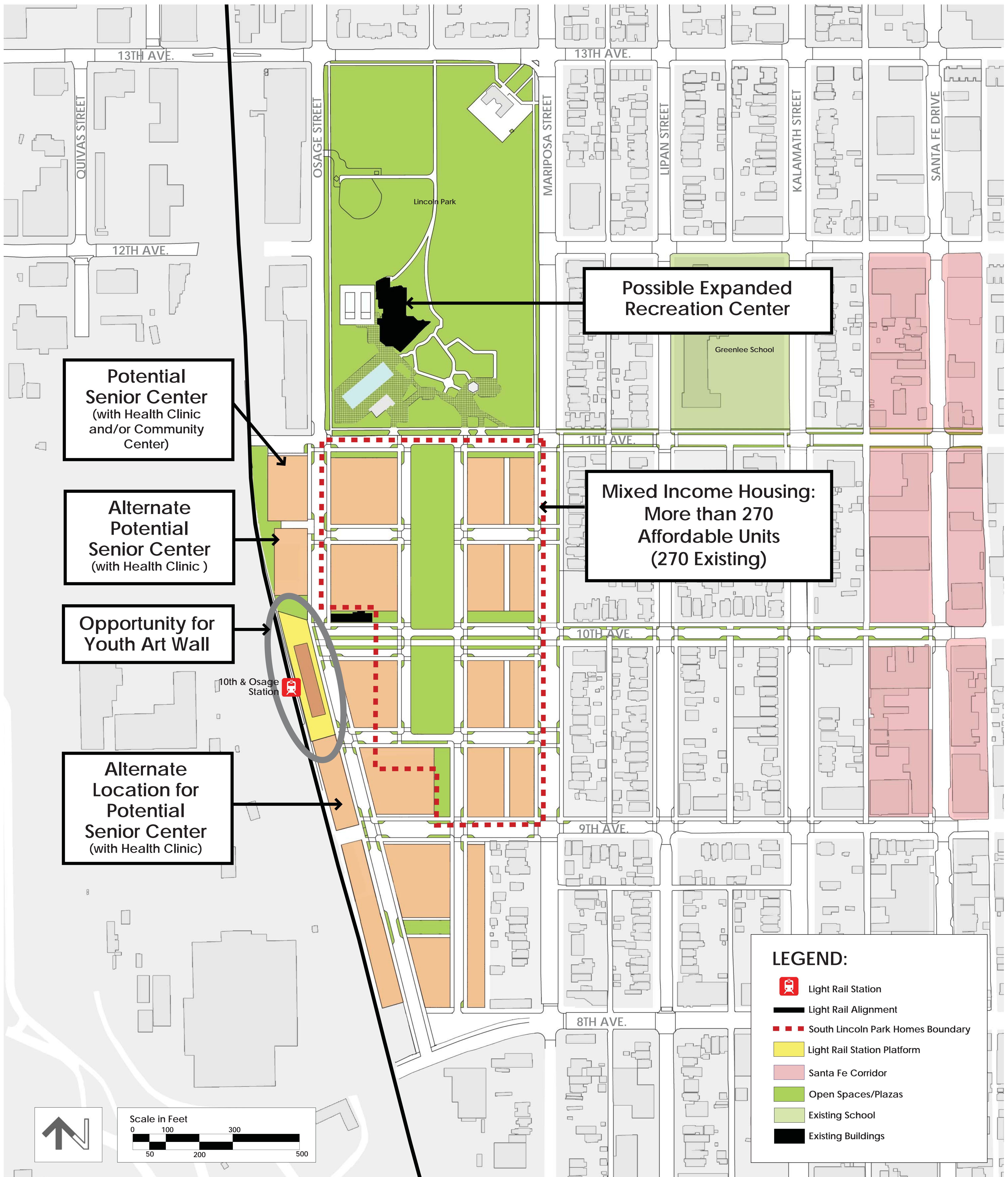


**LEGEND:**

-  Light Rail Station
-  Light Rail Alignment
-  South Lincoln Park Homes Boundary

# Aerial Photograph

South Lincoln Park Homes  
Public Workshop #1 - October 20, 2007 (Draft)  
City and County of Denver Denver Housing Authority Crandall Arambula PC

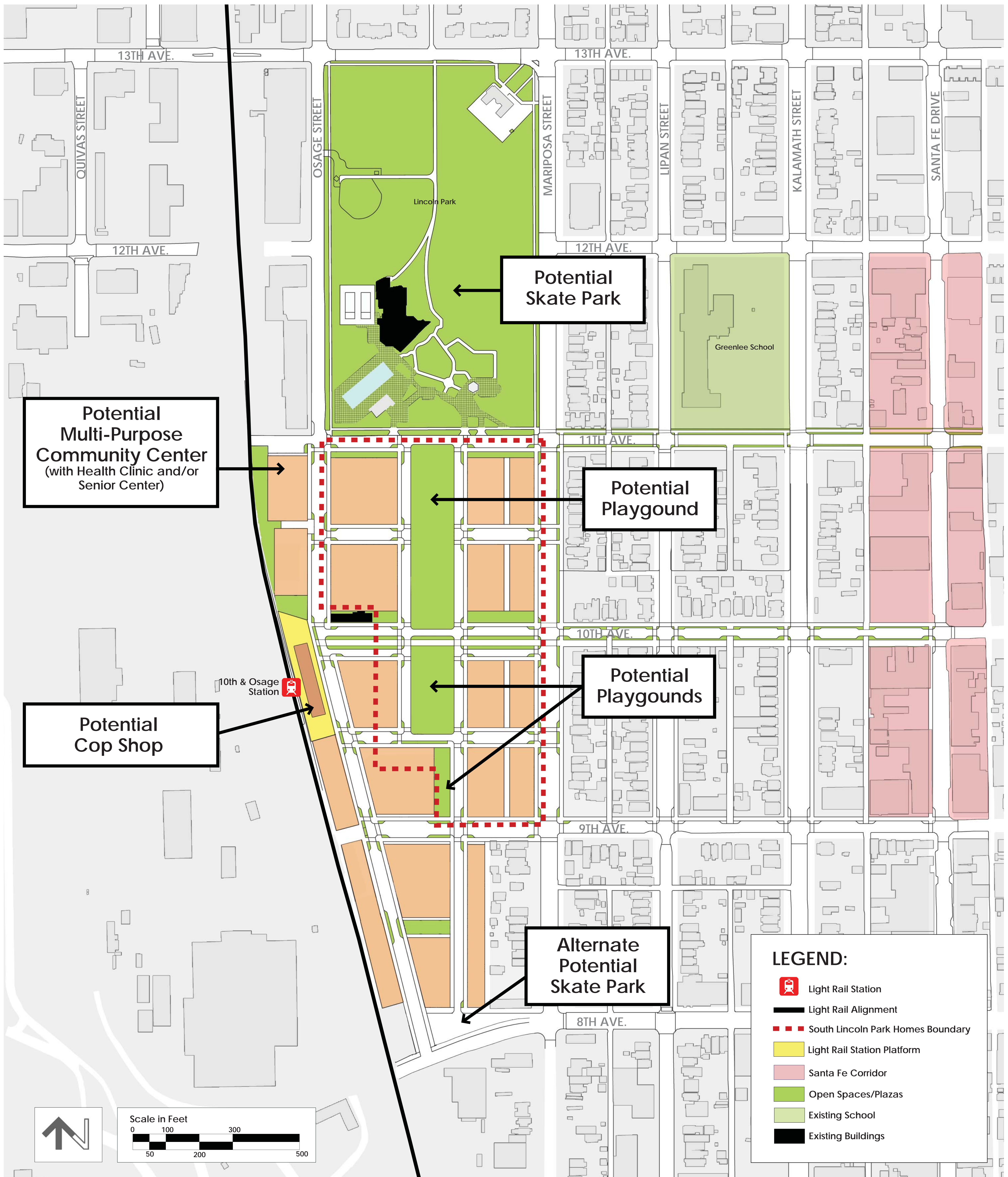


# Focus Area 1: Cultural Diversity

South Lincoln Park Homes

Public Workshop #1 - October 20, 2007 (Draft)

City and County of Denver Denver Housing Authority Crandall Arambula PC

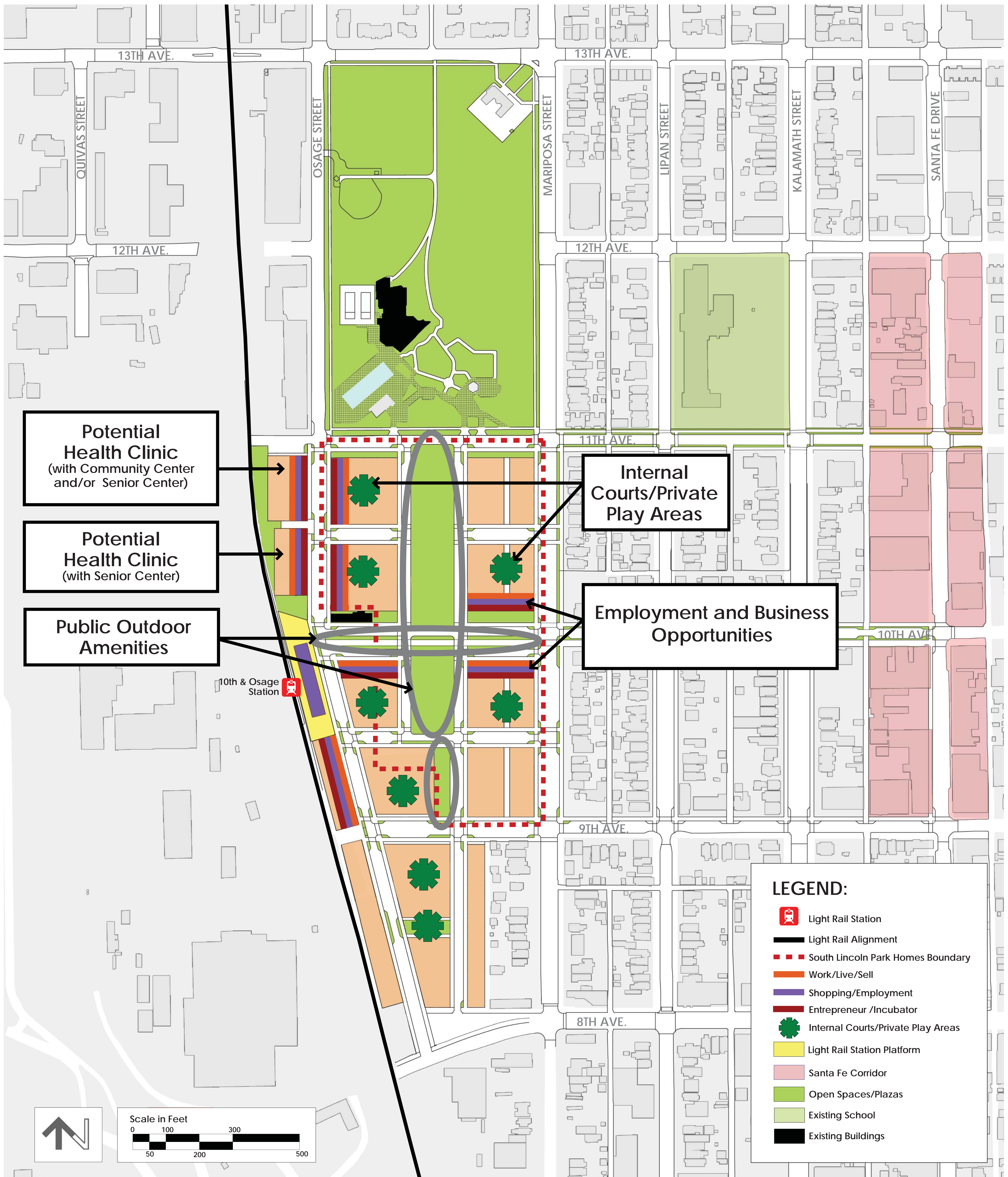


# Focus Area 2: Public Safety

South Lincoln Park Homes

Public Workshop #1 - October 20, 2007 (Draft)

City and County of Denver Denver Housing Authority Crandall Arambula PC

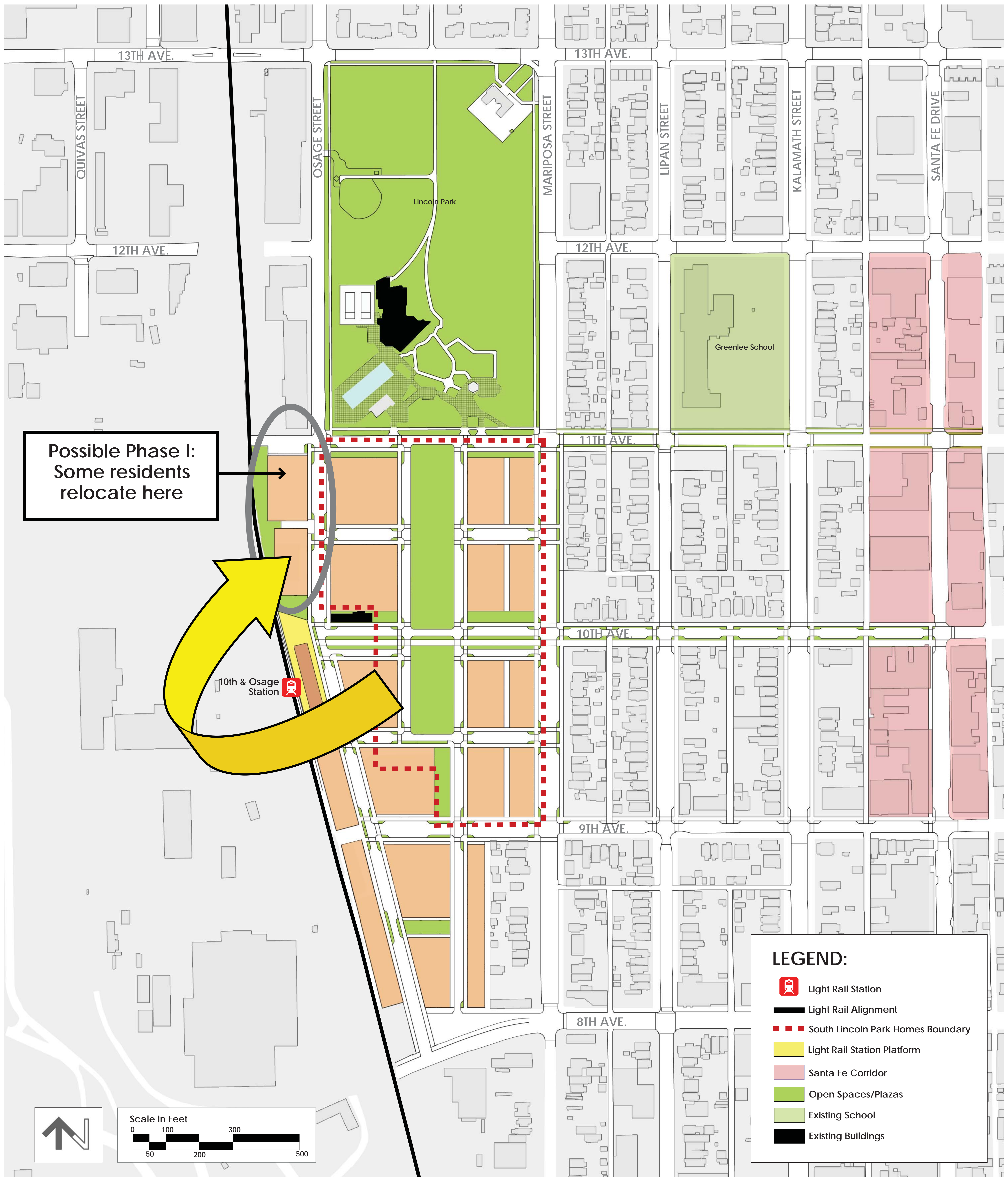


# Focus Area 3: Land Use & Economic Opportunity

South Lincoln Park Homes

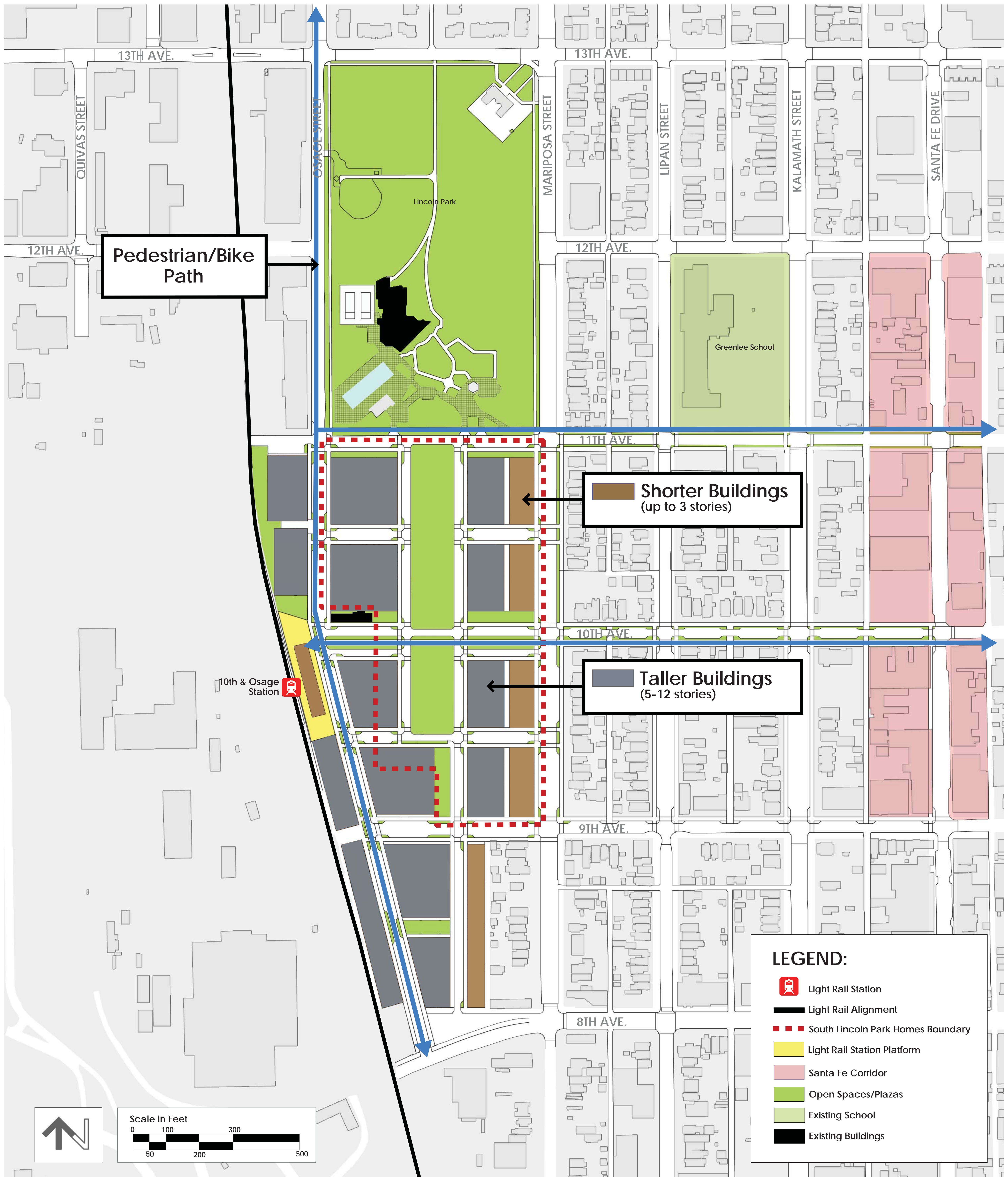
Public Workshop #1 - October 20, 2007 (Draft)

City and County of Denver Denver Housing Authority Crandall Arambula PC



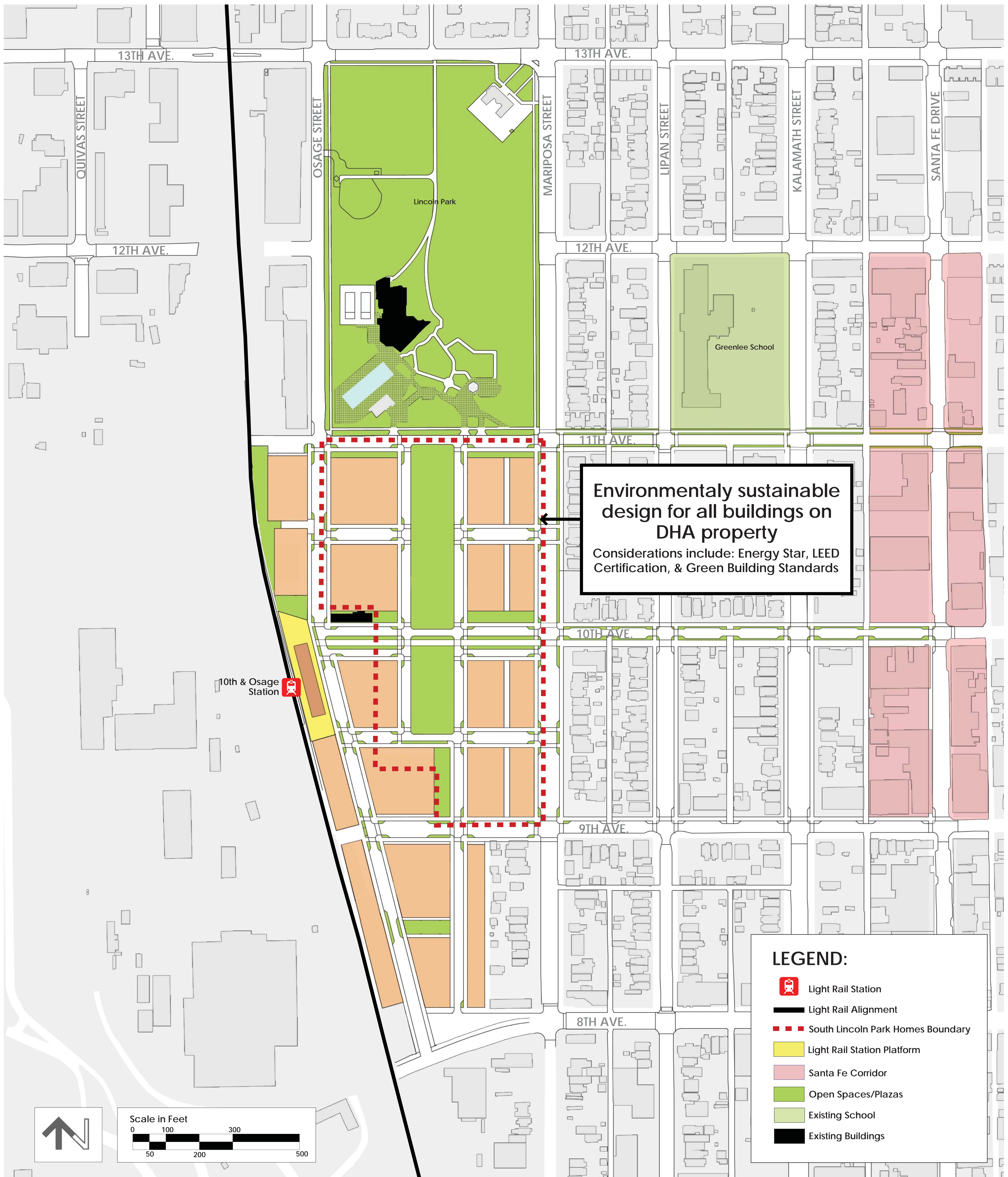
# Focus Area 4: Transition and/or Relocation Process

South Lincoln Park Homes  
 Public Workshop #1 - October 20, 2007 (Draft)  
 City and County of Denver Denver Housing Authority Crandall Arambula PC



# Focus Area 5: How are the Buildings Connected to Transit?

South Lincoln Park Homes  
 Public Workshop #1 - October 20, 2007 (Draft)  
 City and County of Denver Denver Housing Authority Crandall Arambula PC



# Focus Area 6: Environmental Health & Safety

South Lincoln Park Homes

Public Workshop #1 - October 20, 2007 (Draft)

City and County of Denver Denver Housing Authority Crandall Arambula PC